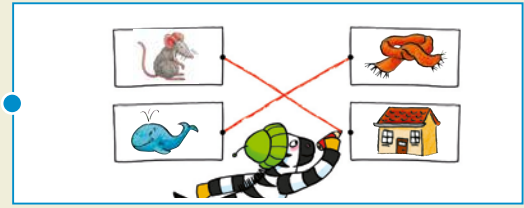
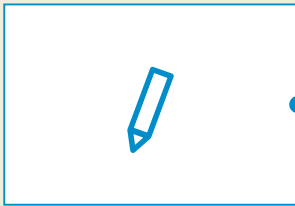
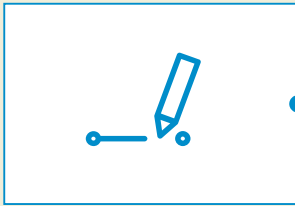
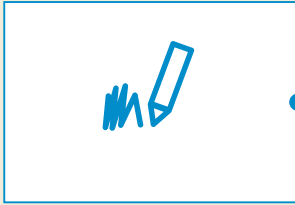
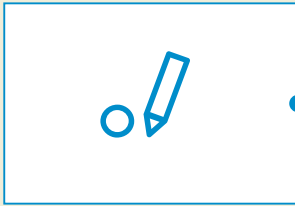
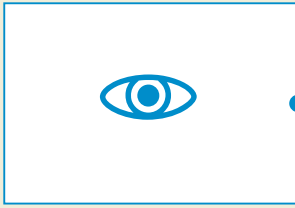


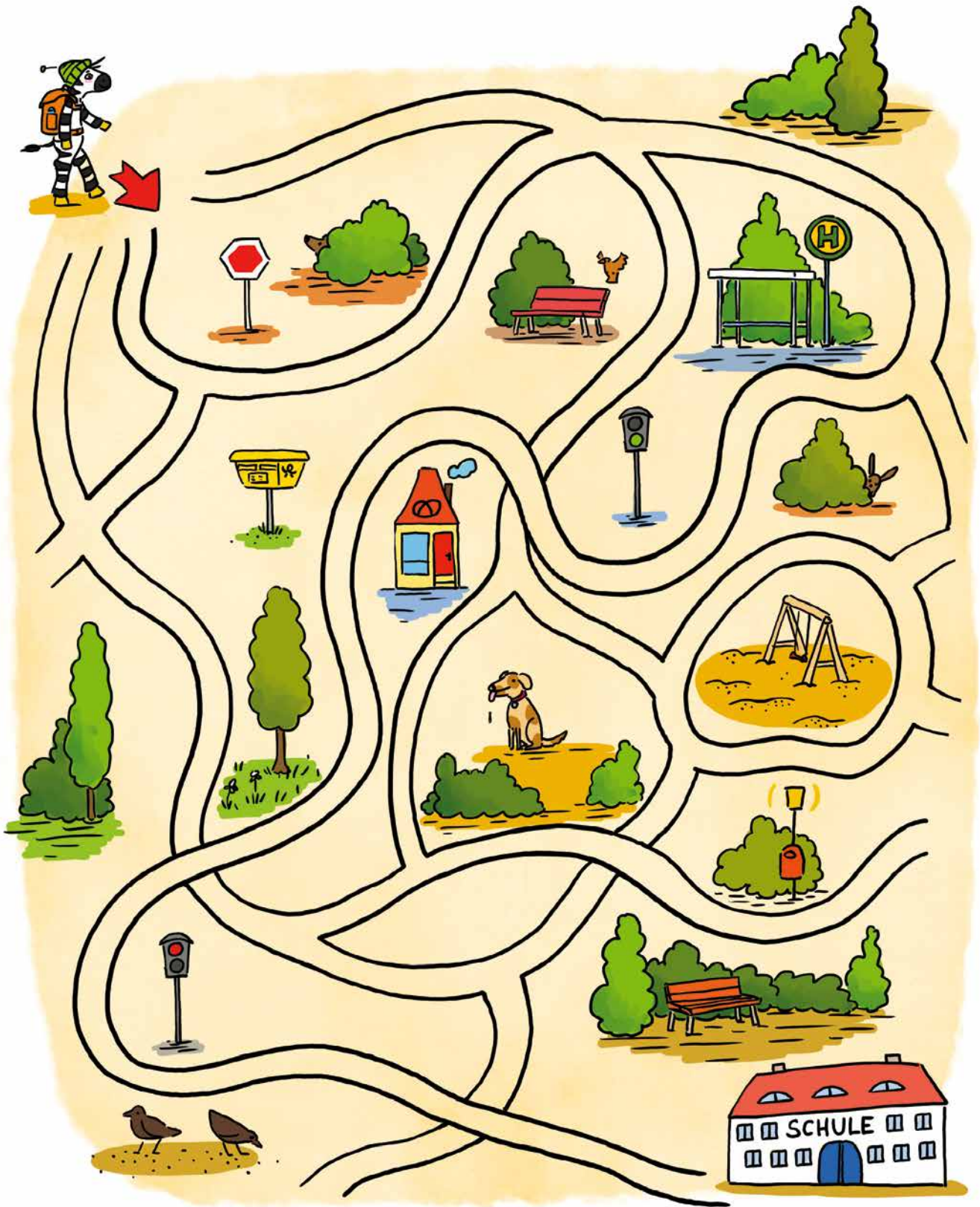


Verbinde!





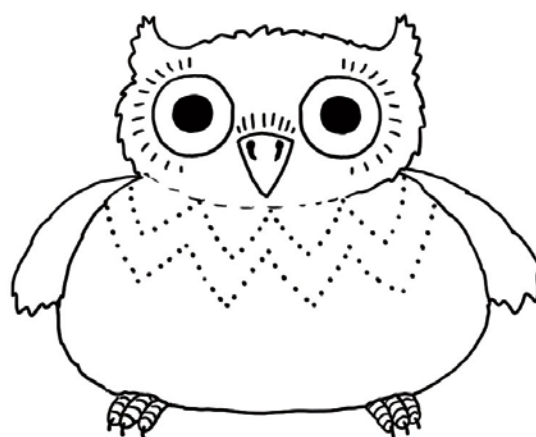
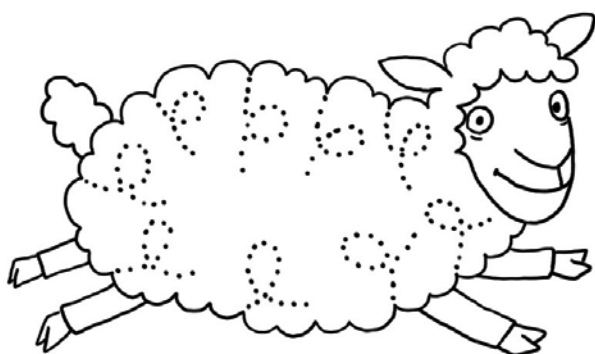
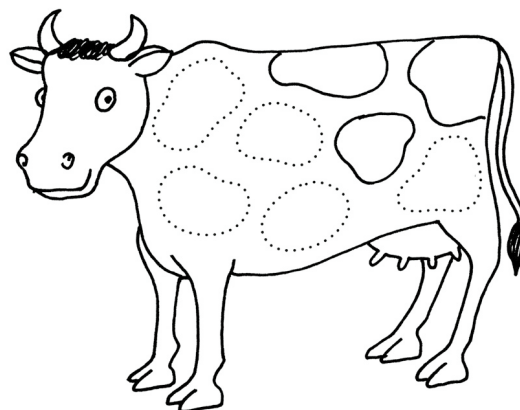
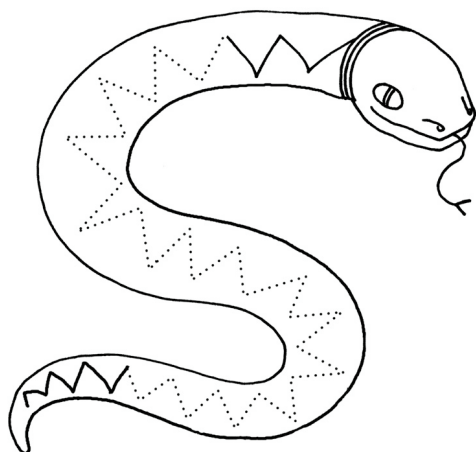
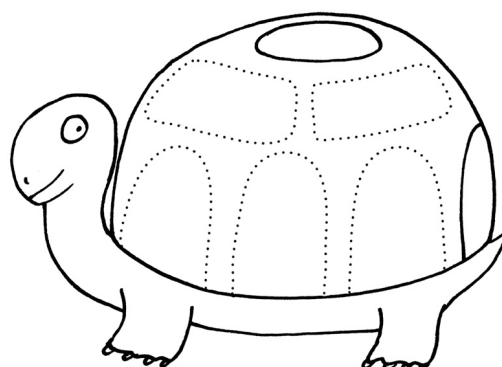
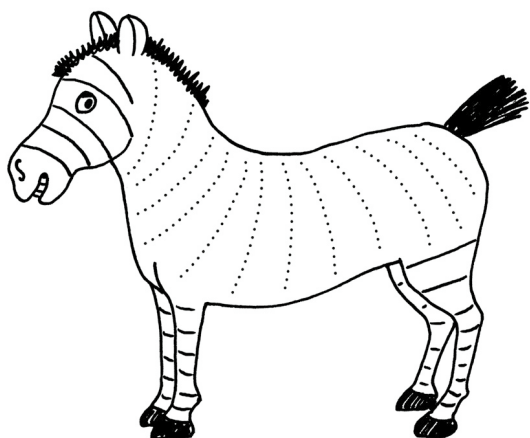
Wie kommt Franz zur Schule? Zeichne.



Feinmotorik: Den Weg durch das Labyrinth finden und nachspüren



Zeichne weiter.



Feinmotorik: Muster erkennen und fortsetzen (Vorübung für das Schwingen und Schreiben verschiedener Buchstaben)



Suche und kreise ein.



Visuelle Wahrnehmung: Ausschnitte suchen und einkreisen

7



Was kann Franz essen? Verbinde.

