

Lautgebärden



M m



L l



Ch ch



B b



S s





D d



W w

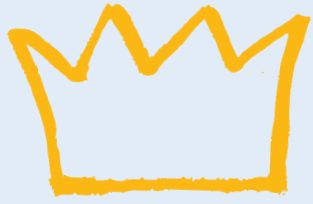


Sch sch



G g





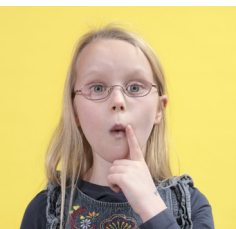
A a



E e



I i

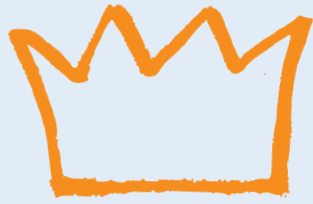


O o



U u





Au au



Ei ei



Eu eu



Ö ö



Ü ü





N n



H h



R r



P p



Z z





T t



F f



J j



K k

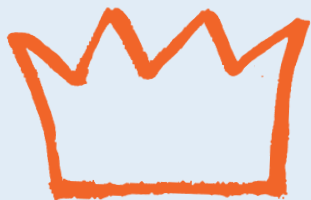




-ng



Pf pf



Ä ä



-äu

