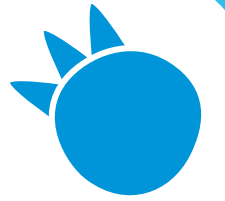


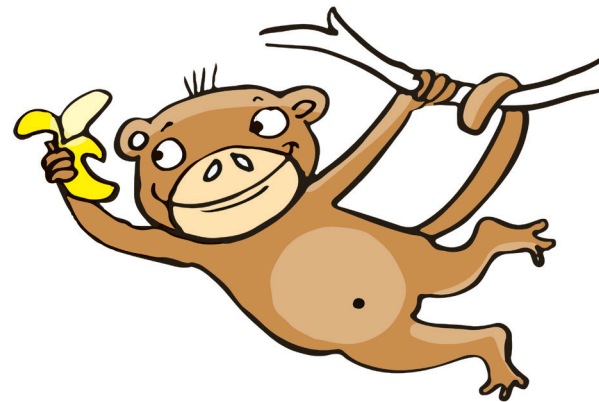
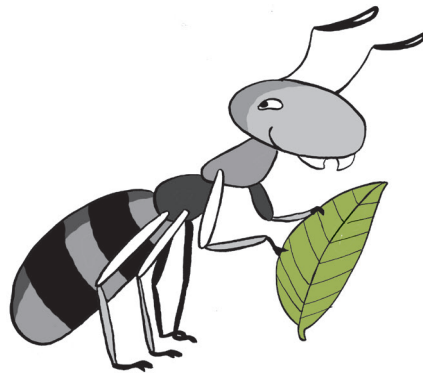


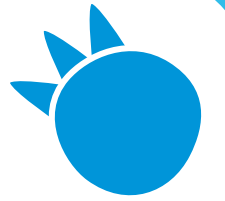
NiKO

Lautbilder in Grundschrift

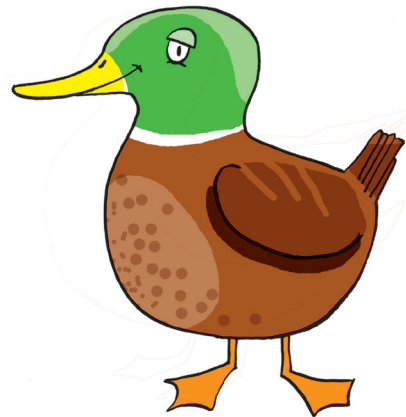
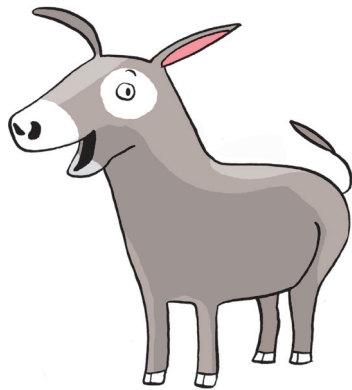


A a

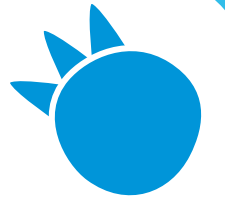




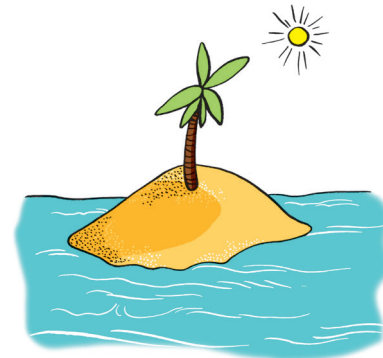
E e - e

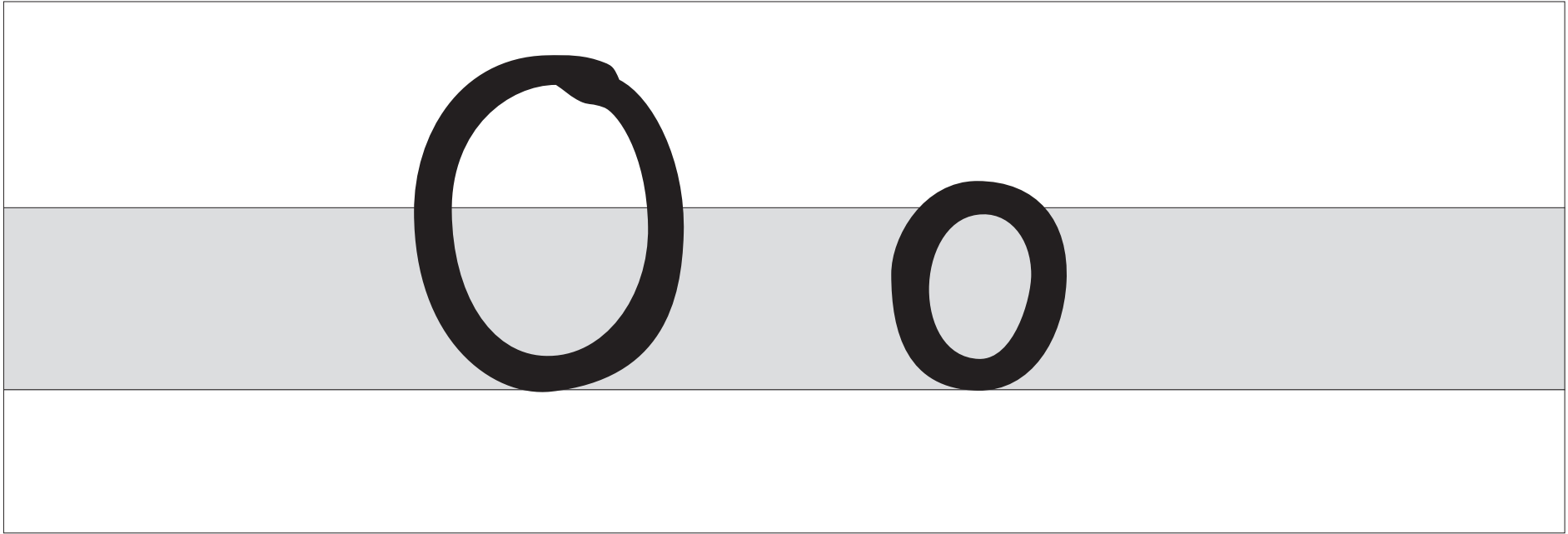
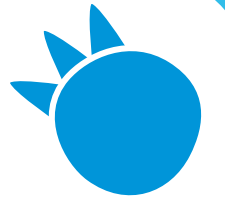


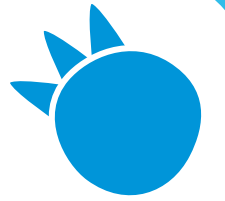
Blume



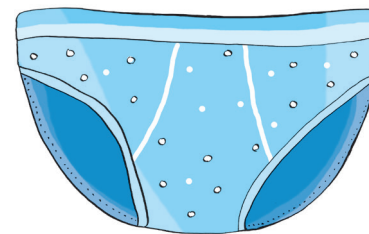
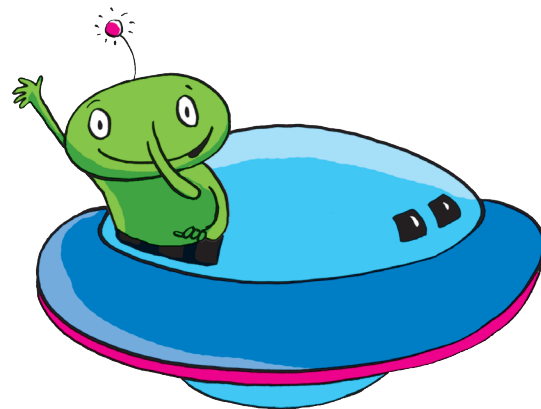
li

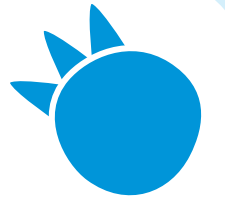




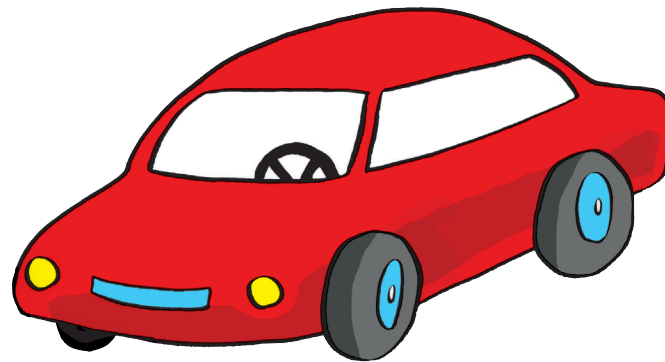


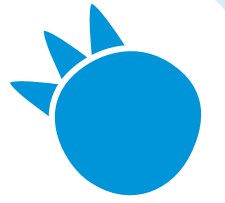
U u



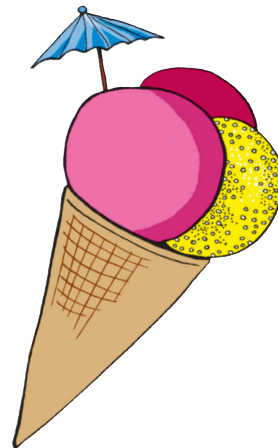


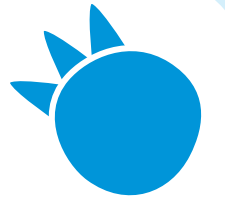
A u au





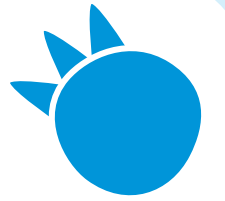
Ei ei





E u e u

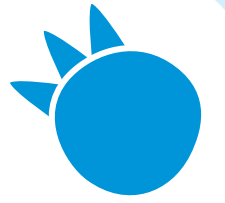




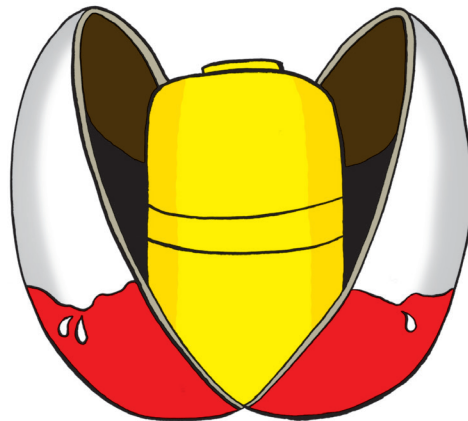
Ö

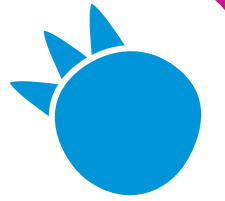
ö



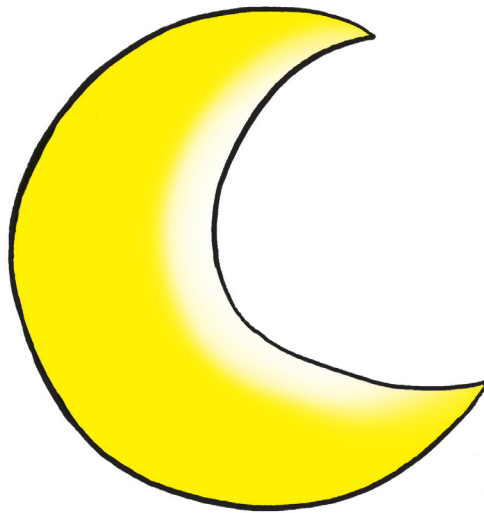


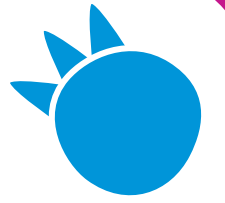
t t





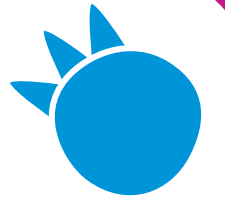
M m



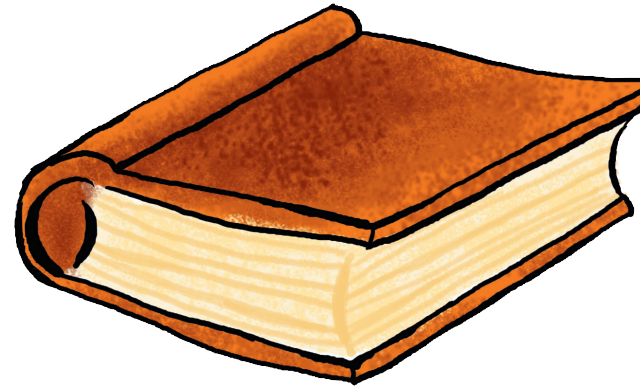


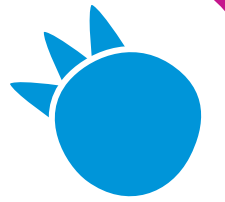
L L



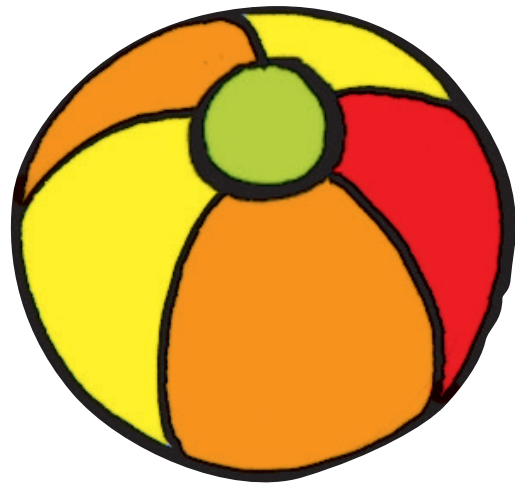


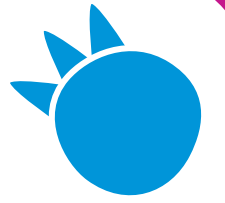
Ch ch



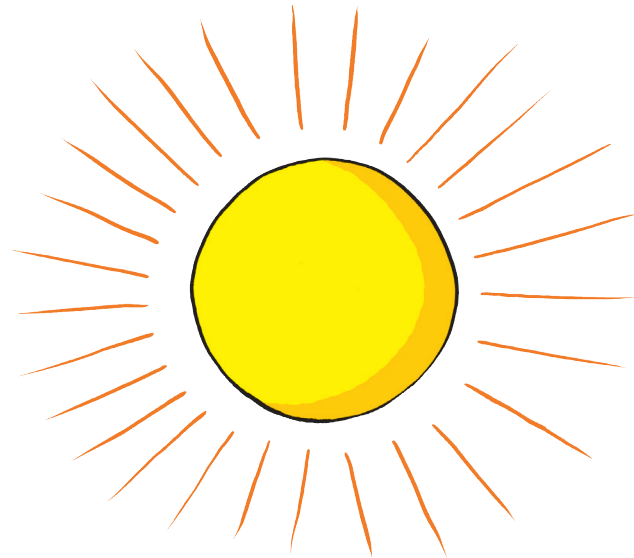


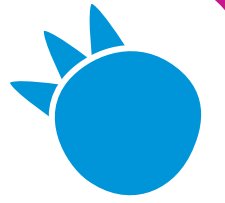
B b



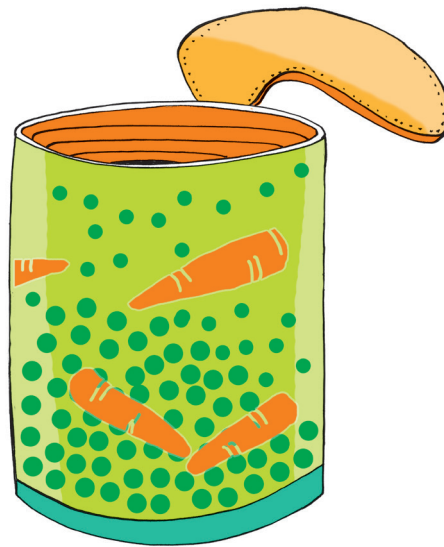


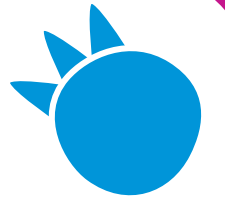
S s





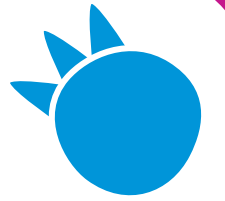
D d



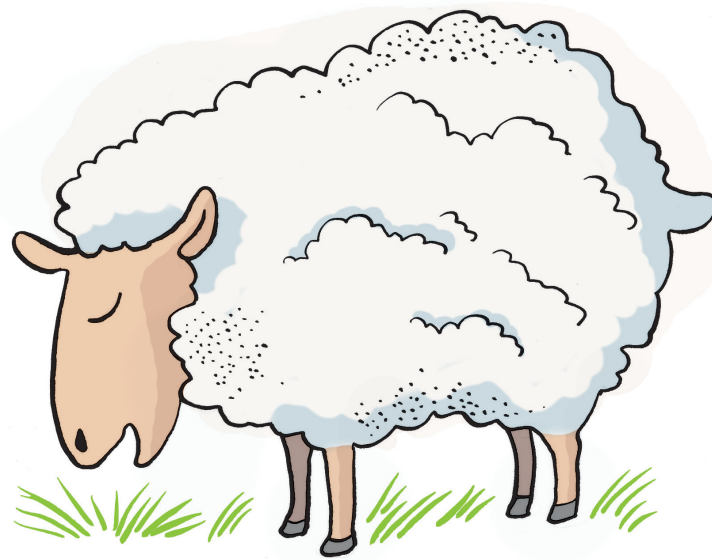


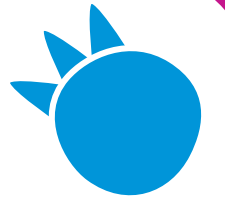
W w



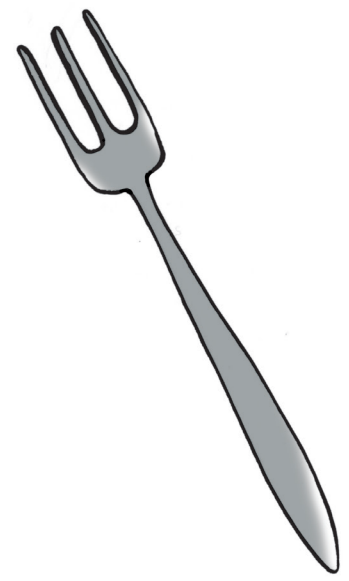


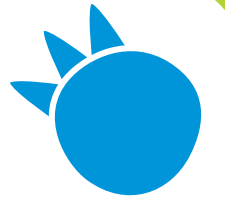
Sch sch





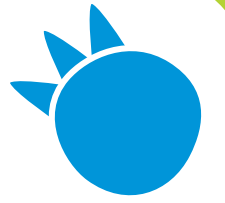
G g



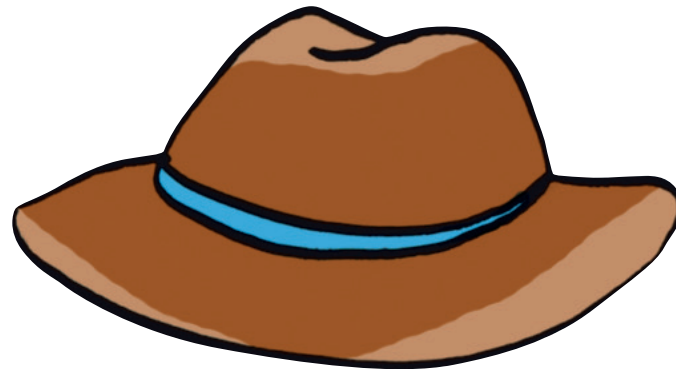


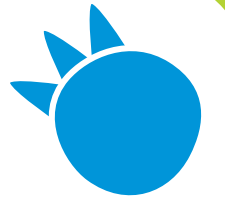
N n





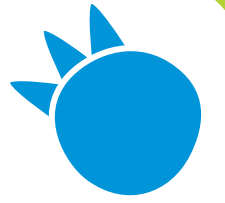
H h



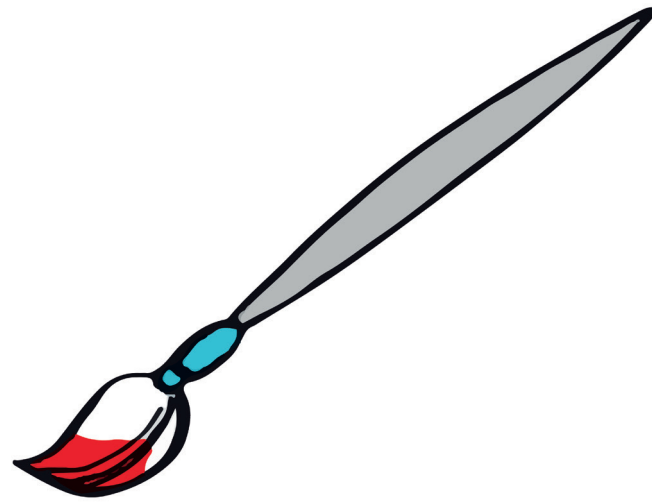


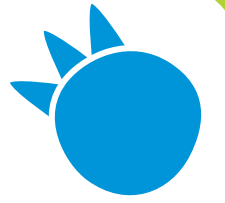
R r





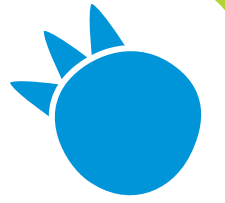
P p



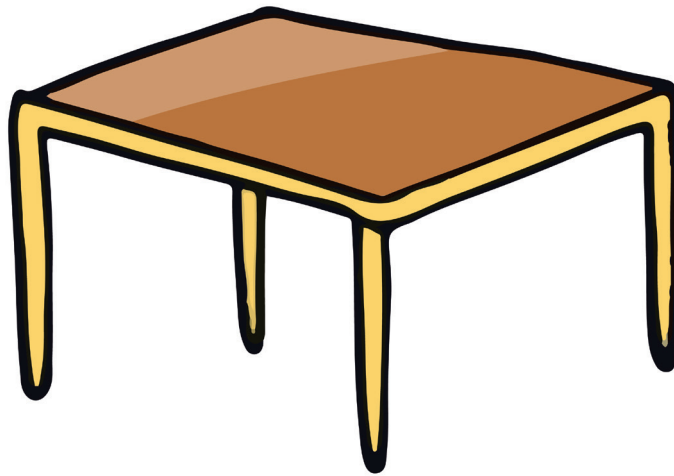


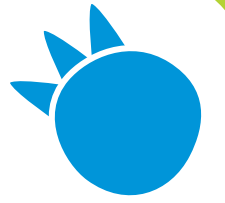
Z z



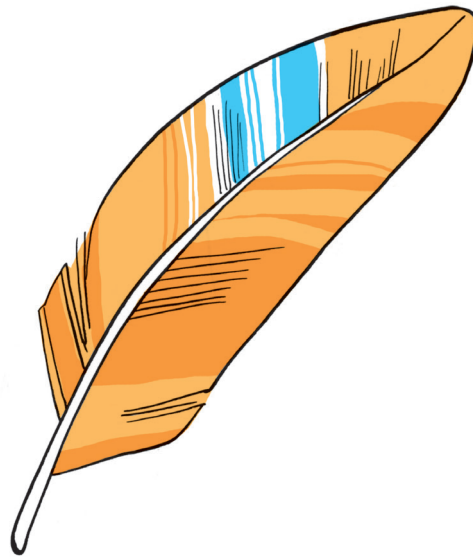


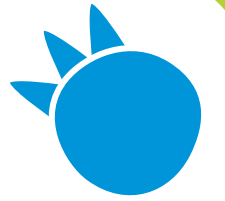
T t





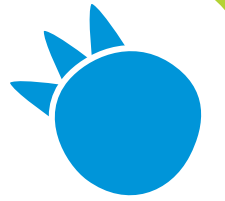
F f





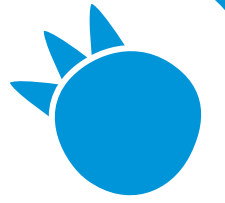
J j



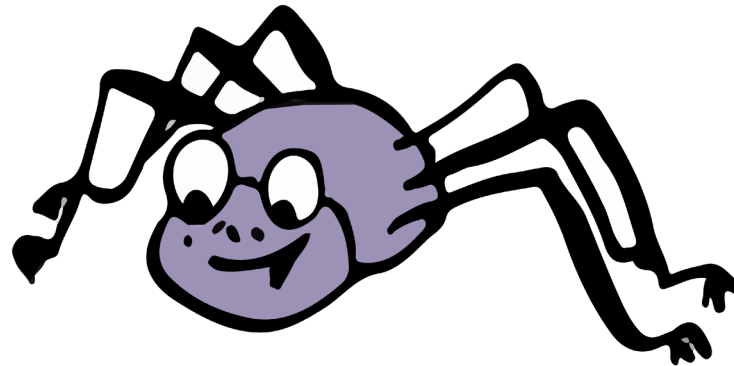


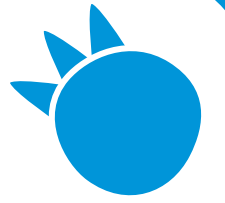
K k





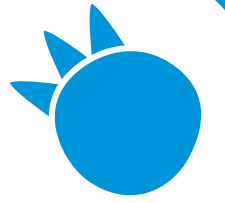
S p s p





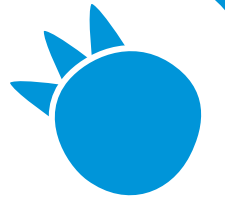
St st



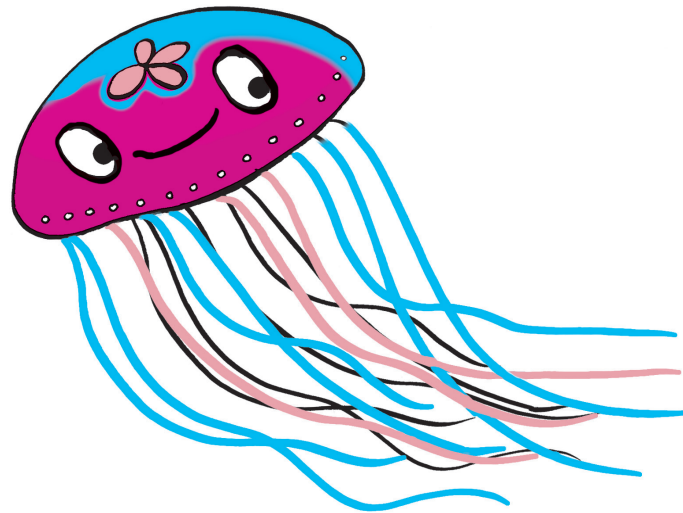


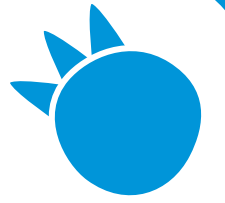
Pf pf



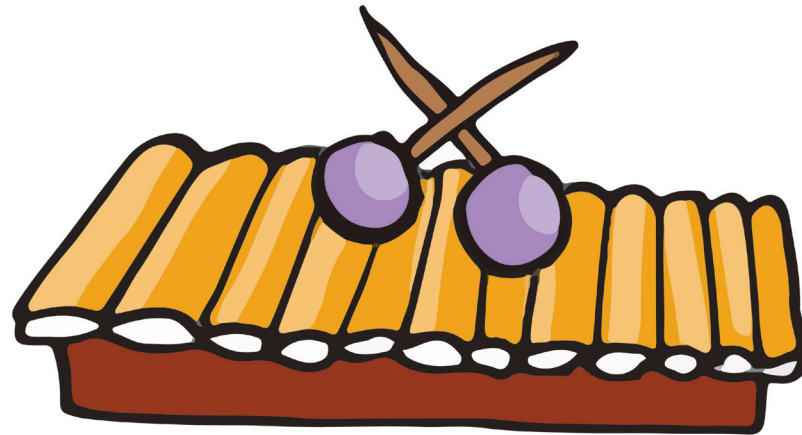


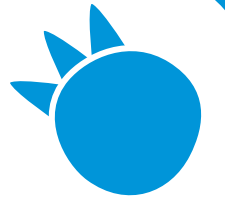
Qu qu





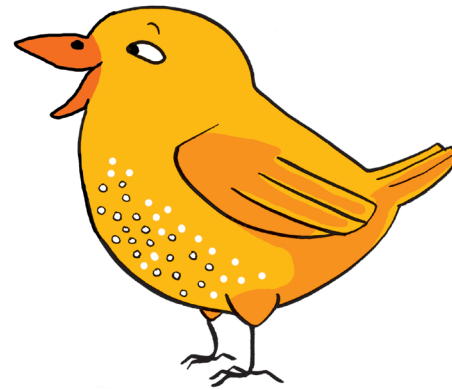
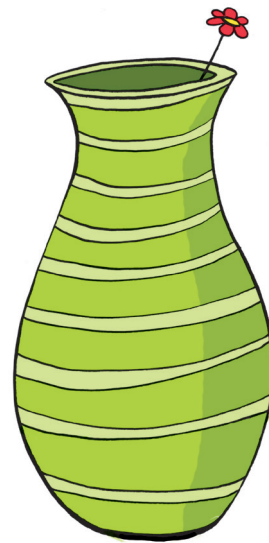
X x

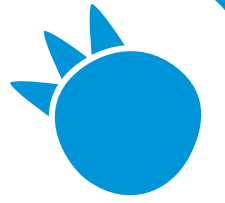




V

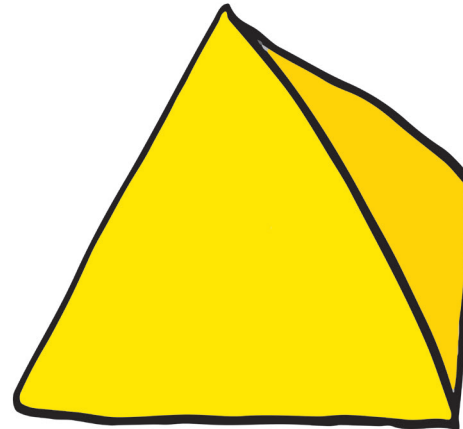
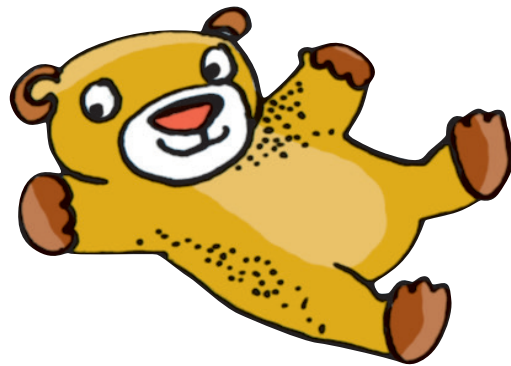
v

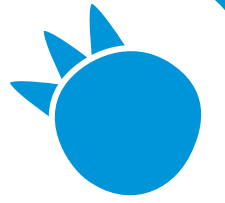




Y

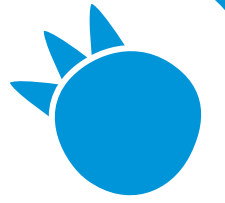
y





C c

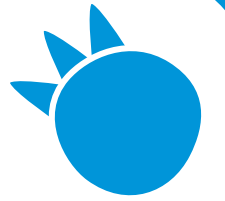




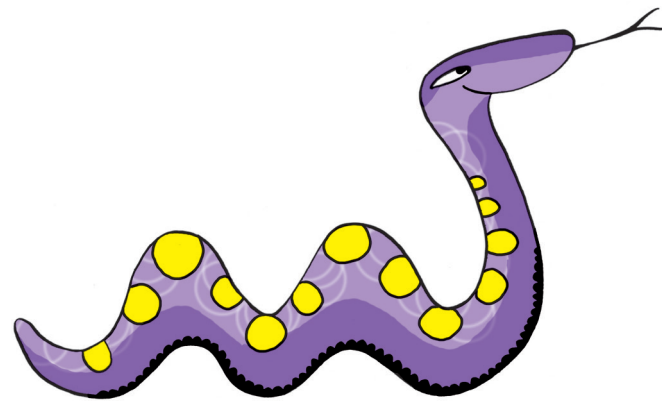
- ß



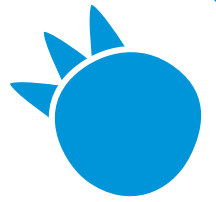
Füße



-ng



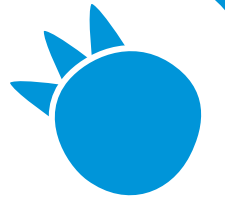
Schlange



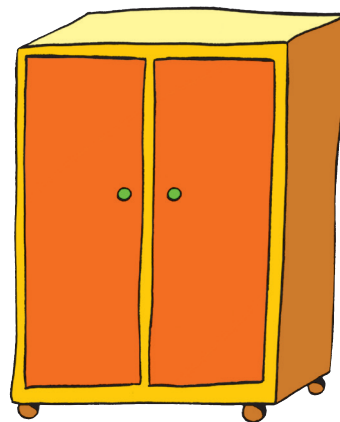
-ck



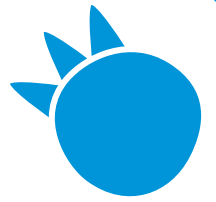
Jacke



-nk



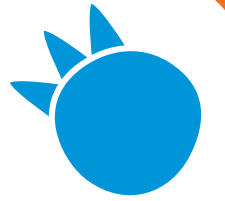
Schrank



-tz



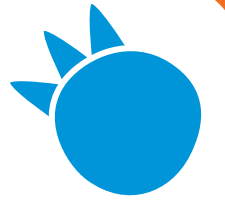
Katze



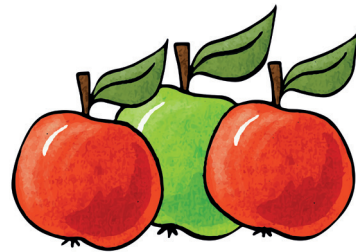
-ie



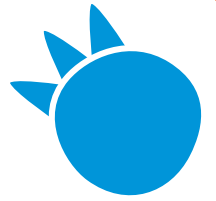
Riese



Ä ä



Äpfel



••
- ä u



Mäuse

Das Werk und seine Teile sind urheberrechtlich geschützt. Jede Nutzung in anderen als den gesetzlich zugelassenen Fällen bedarf der vorherigen schriftlichen Einwilligung des Verlages. Hinweis §52 a UrhG: Weder das Werk noch seine Teile dürfen ohne eine solche Einwilligung eingescannt und in ein Netzwerk eingestellt werden. Dies gilt auch für Intranets von Schulen und sonstigen Bildungseinrichtungen. Fotomechanische oder andere Wiedergabeverfahren nur mit Genehmigung des Verlages.

© Ernst Klett Verlag GmbH, Stuttgart 2020. Alle Rechte vorbehalten. www.klett.de

Illustrationen: Liliane Oser, Hamburg; Anja Vogel-Jaich, Berlin

Die **Niko Lautbilder**

- zeigen jeden Buchstaben und die Buchstabenkombinationen der Schreibtabelle im Großformat
- sind zum Aufhängen im Klassenzimmer gedacht
- unterstützen den Schriftspracherwerb und das Erlernen einer verbundenen Schrift im Anfangsunterricht

Grundschulblog online

www.grundschul-blog.de

