



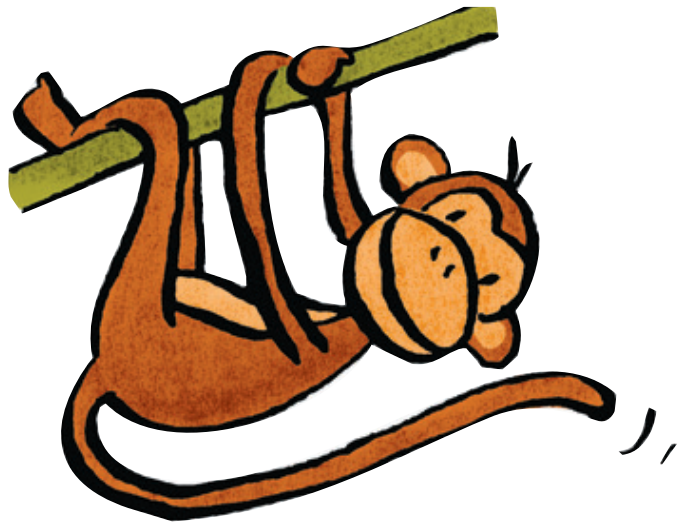
Zebra 1

Lautbilder in Grundschrift



A

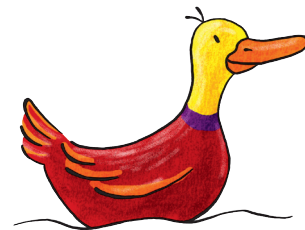
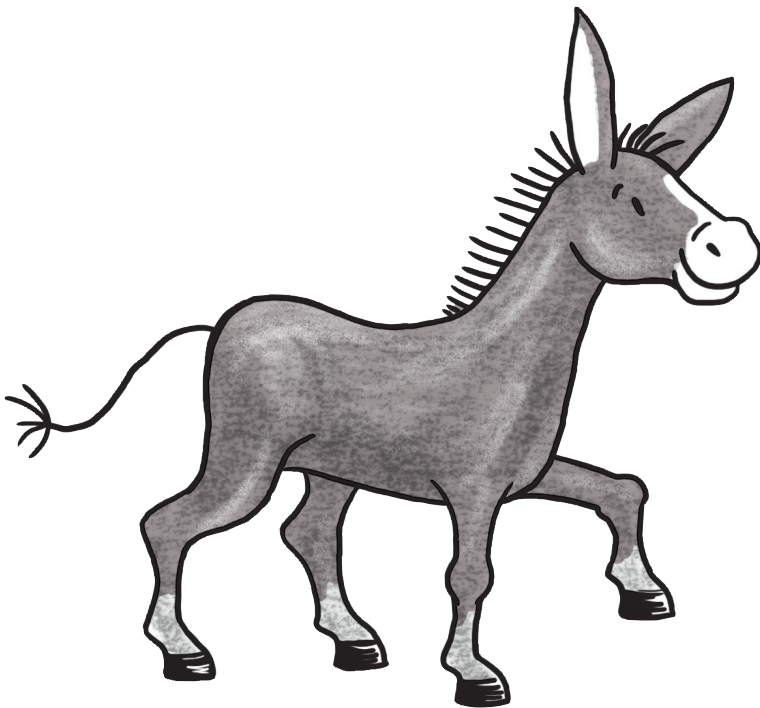
a

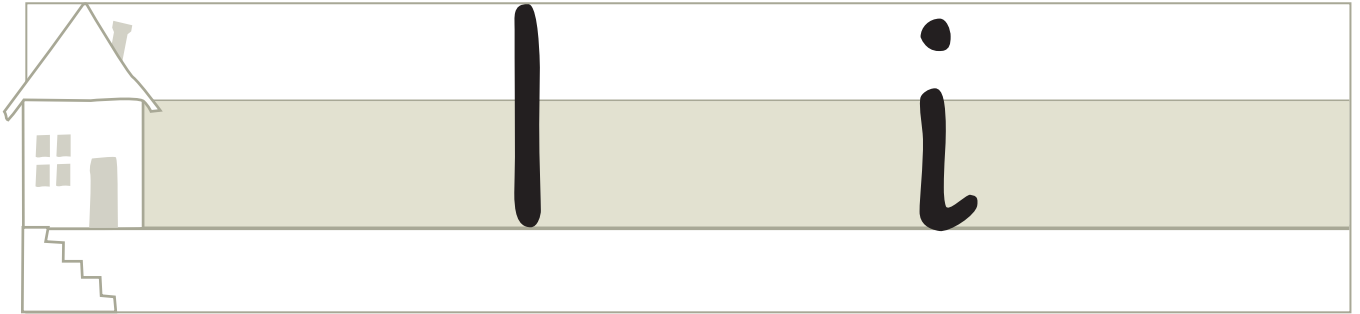


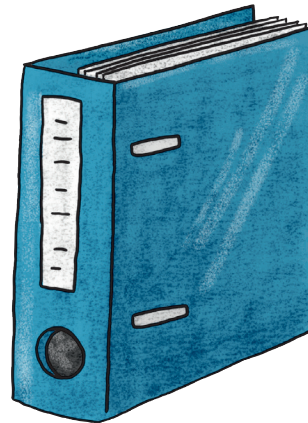
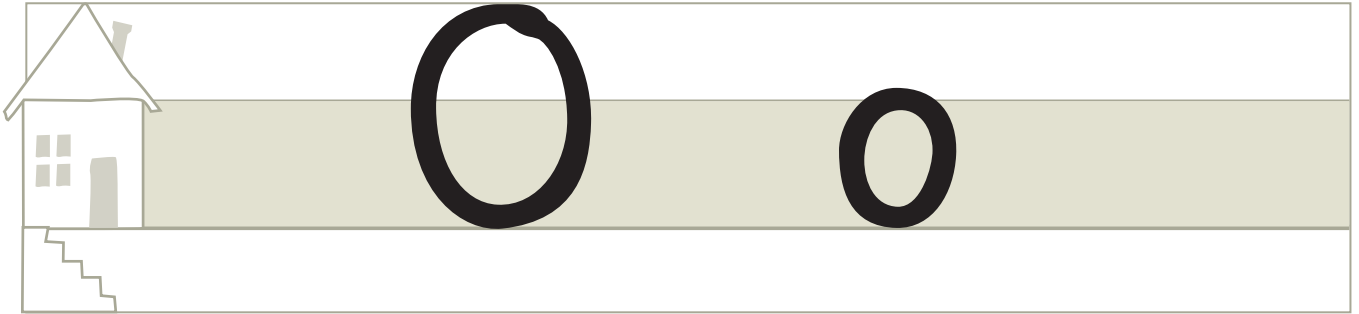


E

e



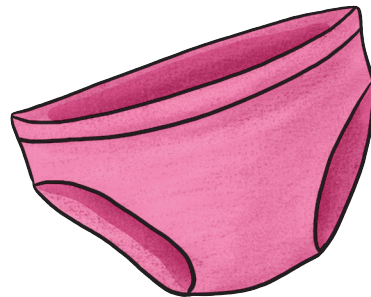
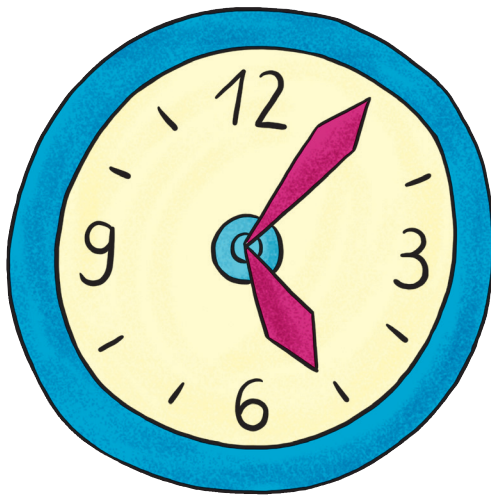






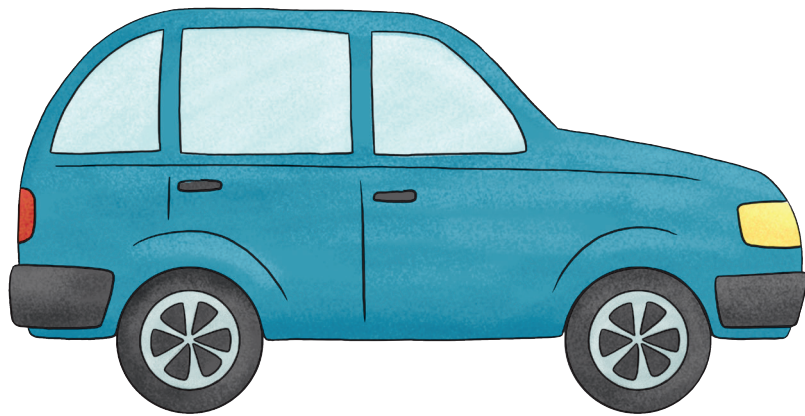
U

u





Au au





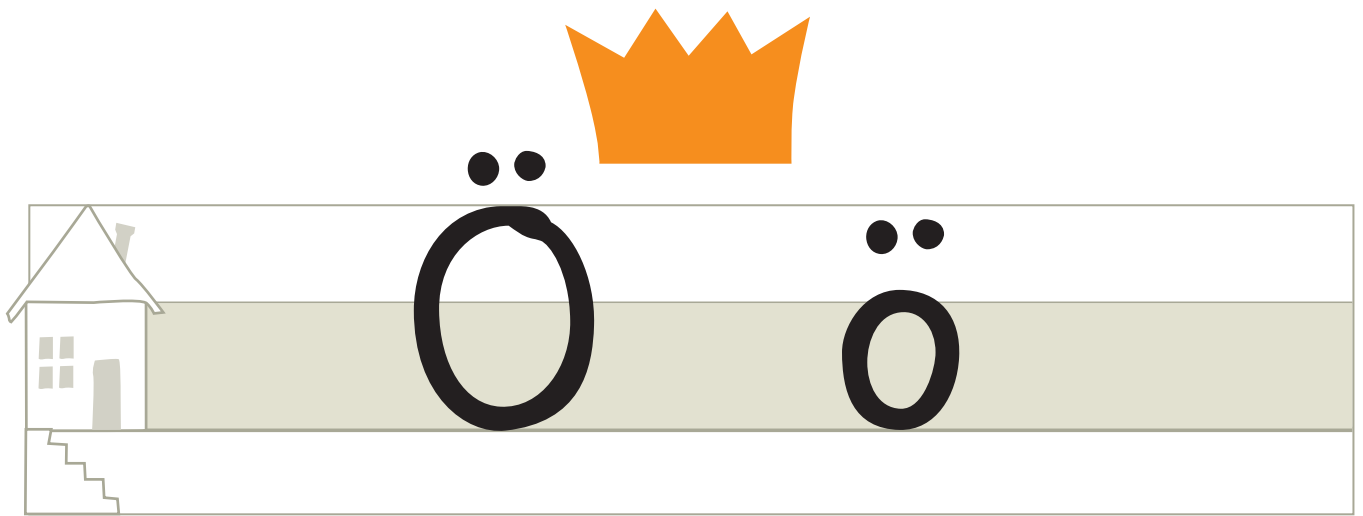
Ei ei



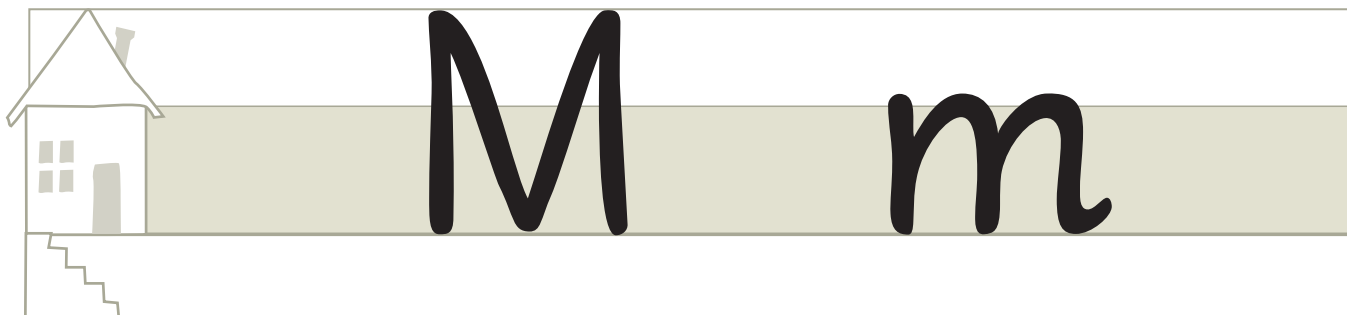


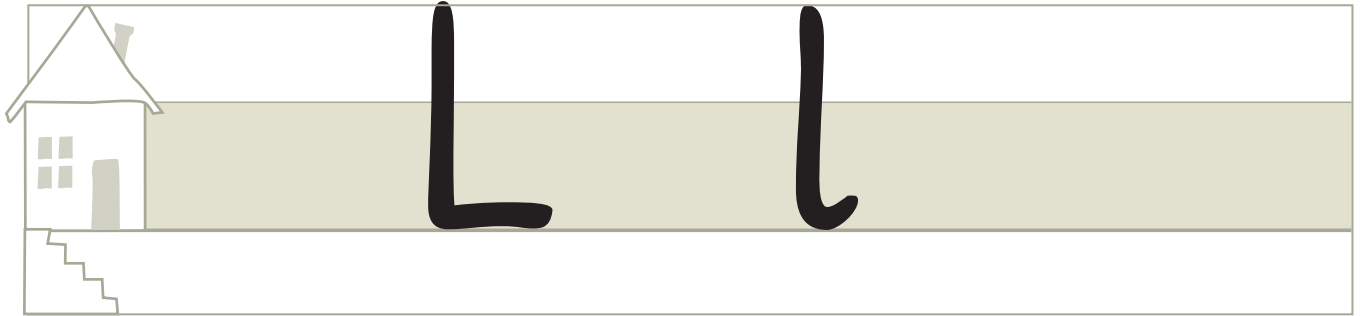
Europe





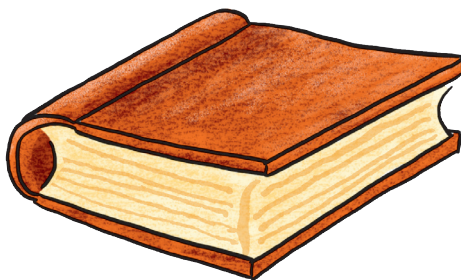








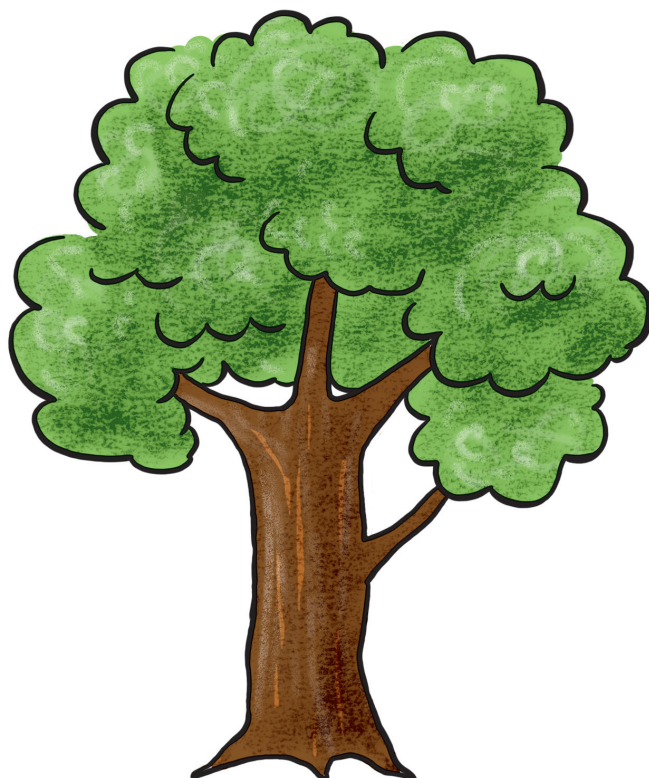
Ch ch

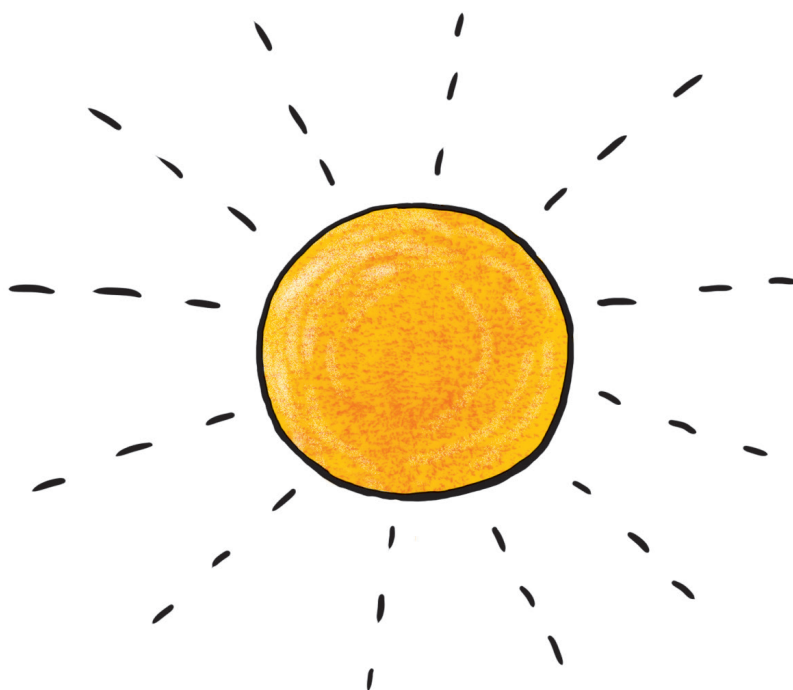


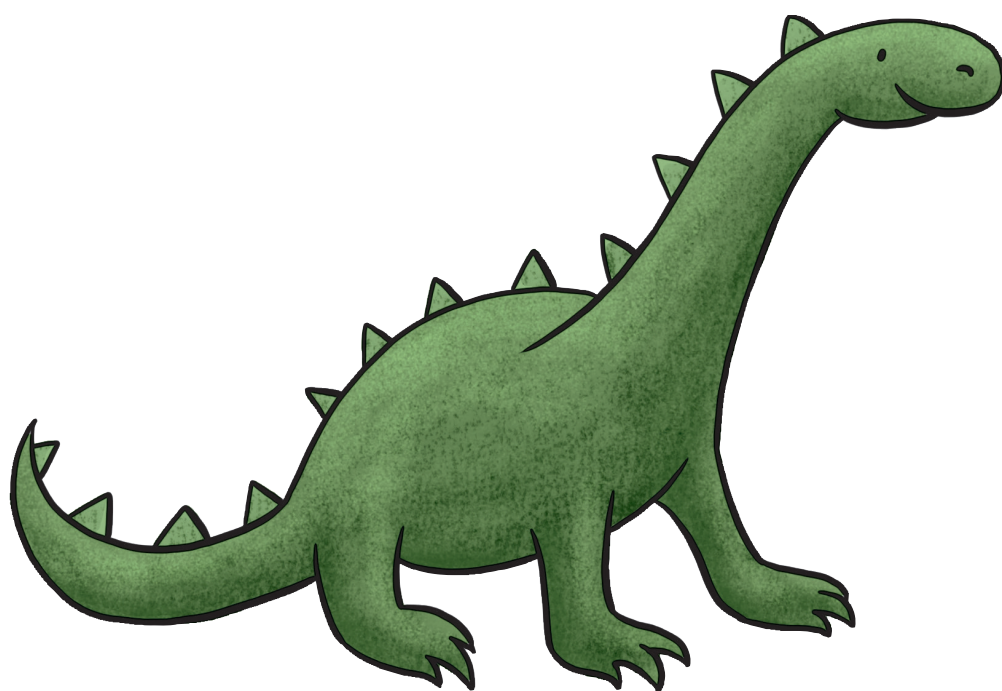
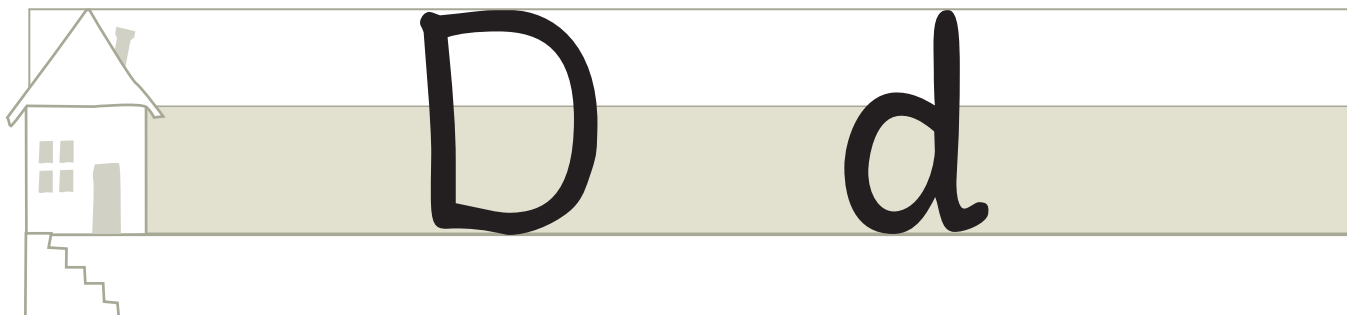


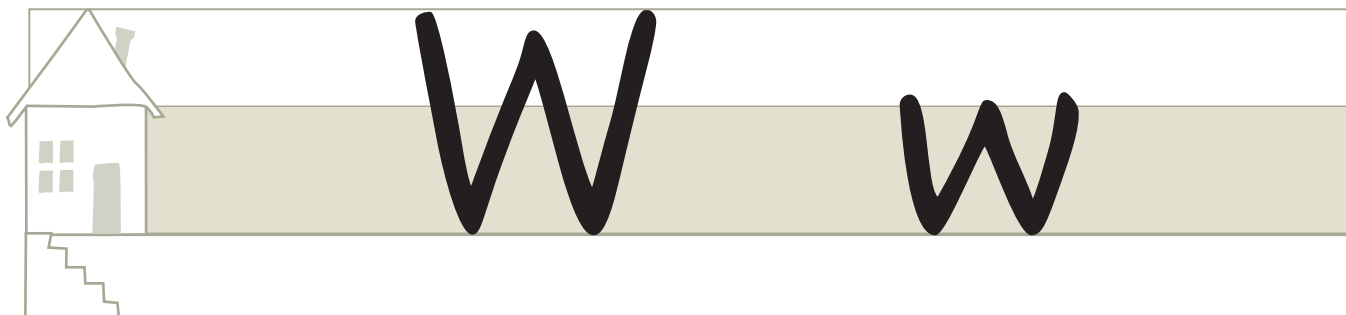
B

b



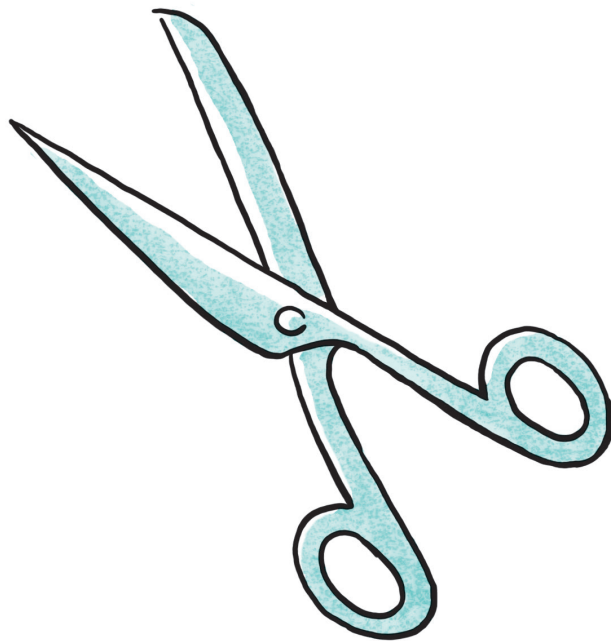


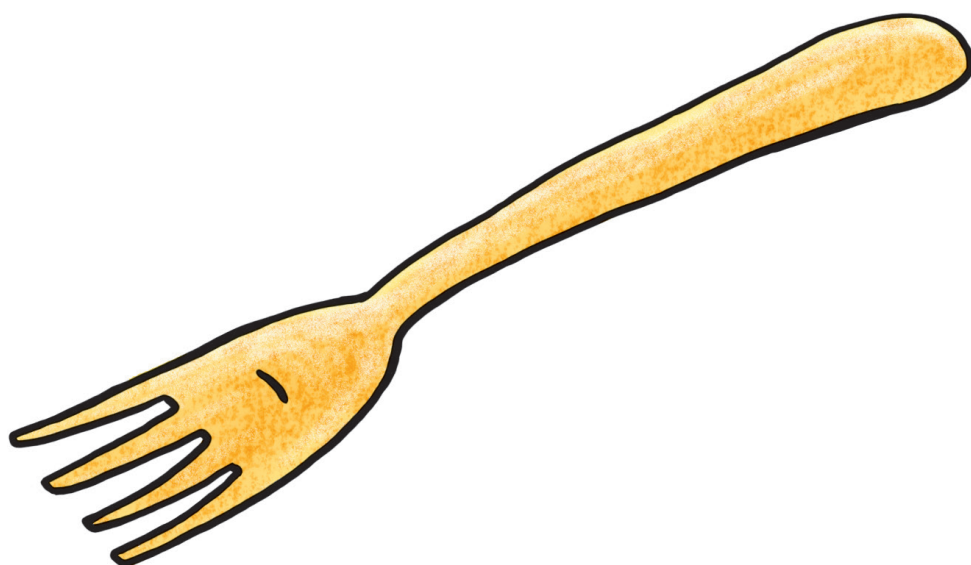




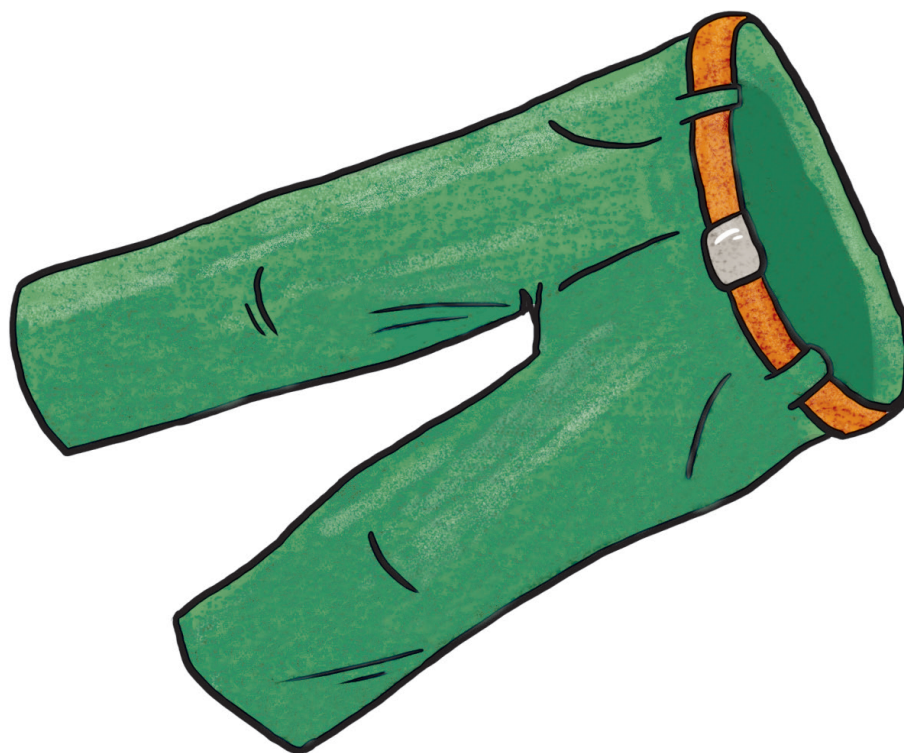
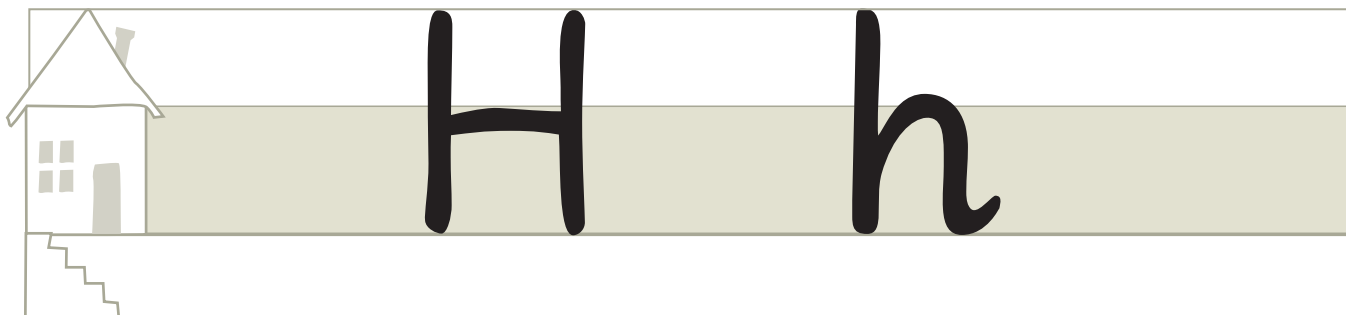


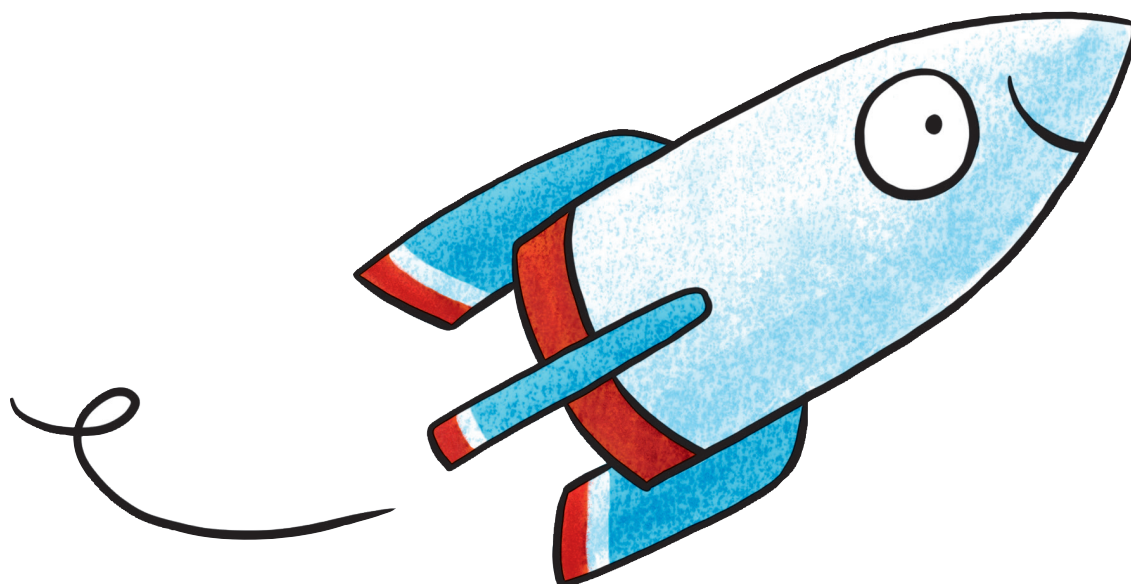
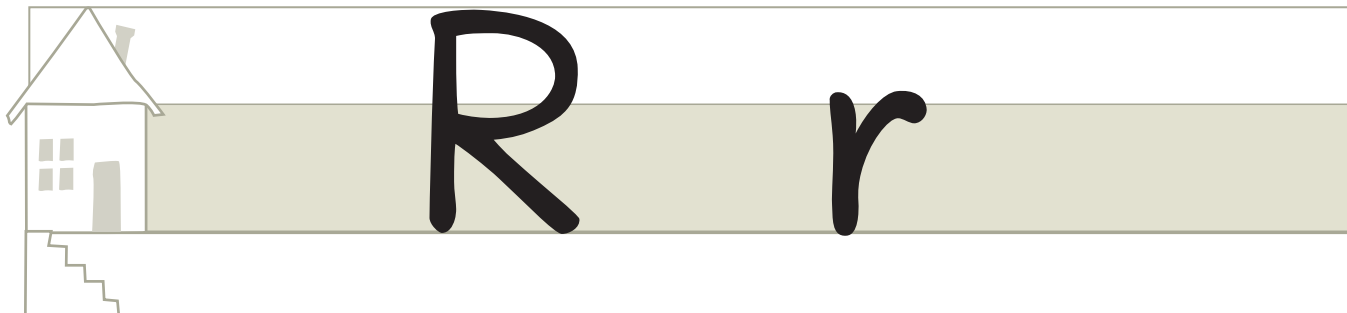
Sch sch

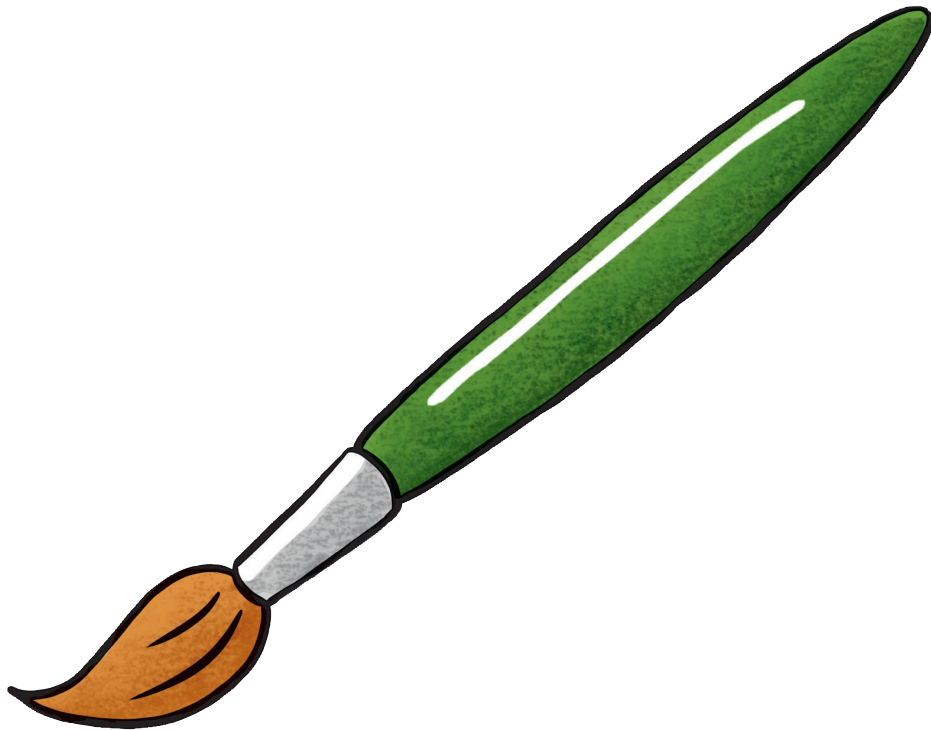
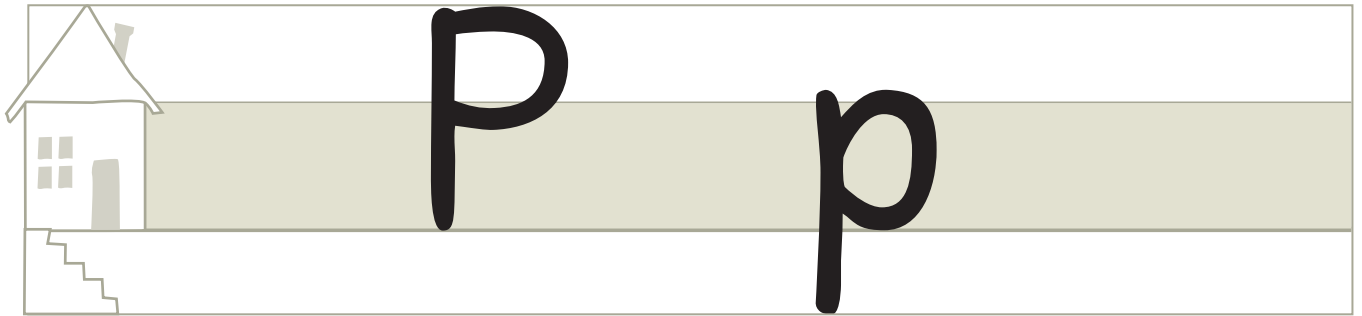


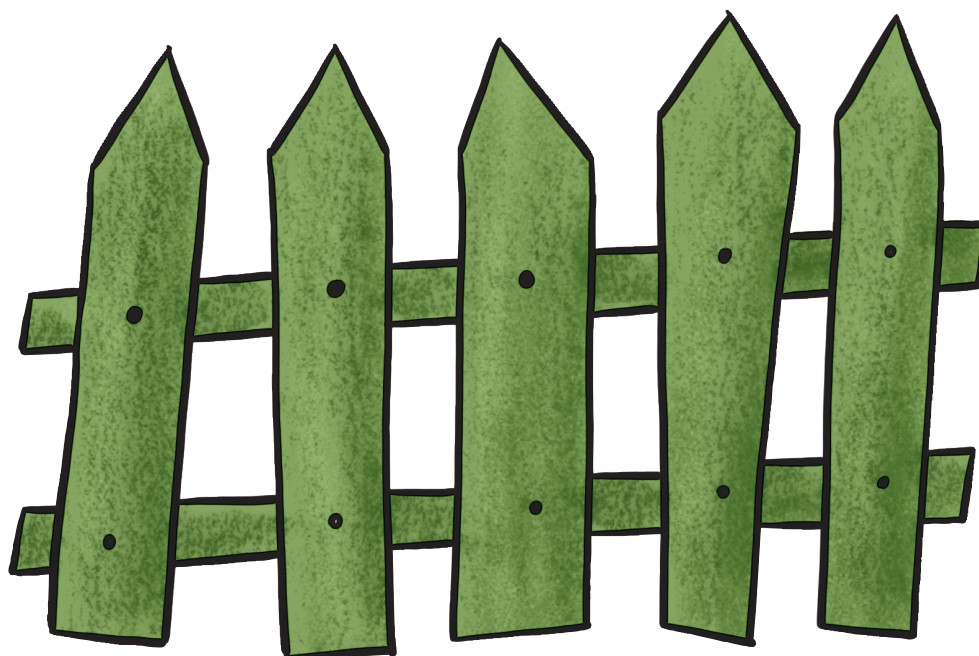
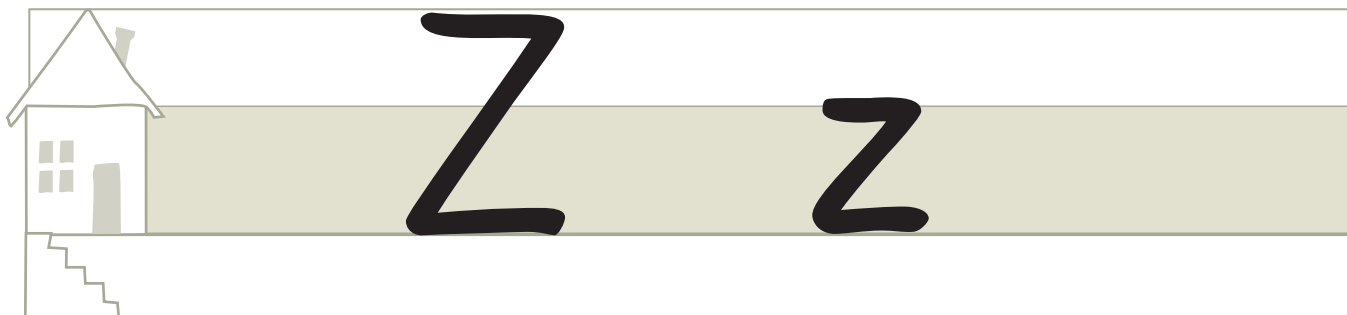












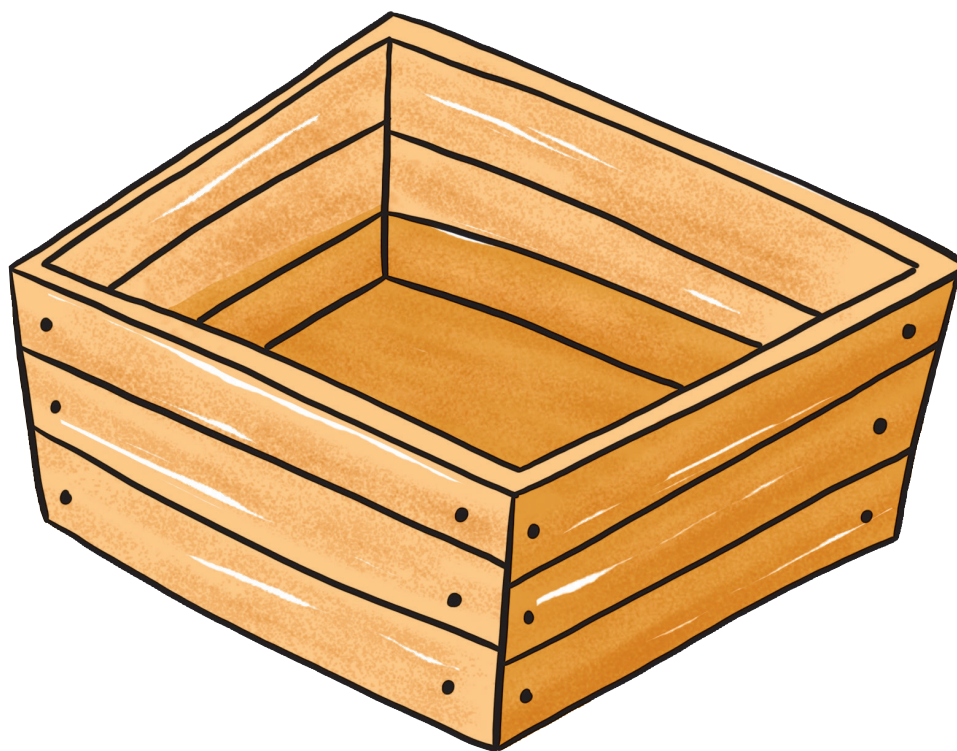
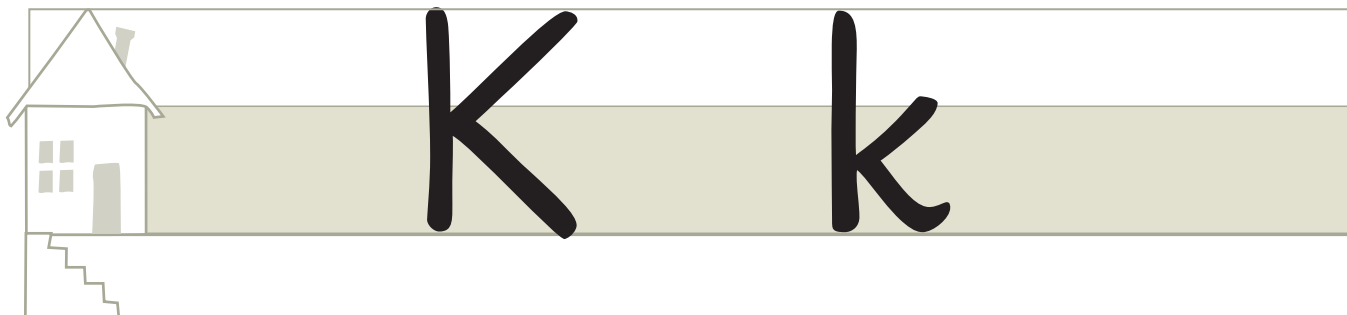






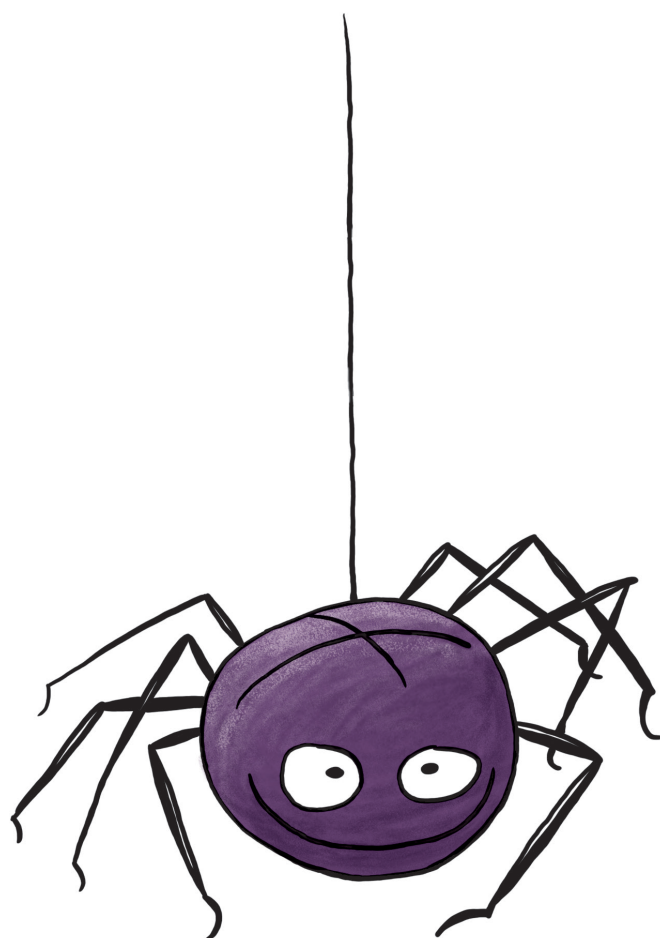
J j







Sp sp



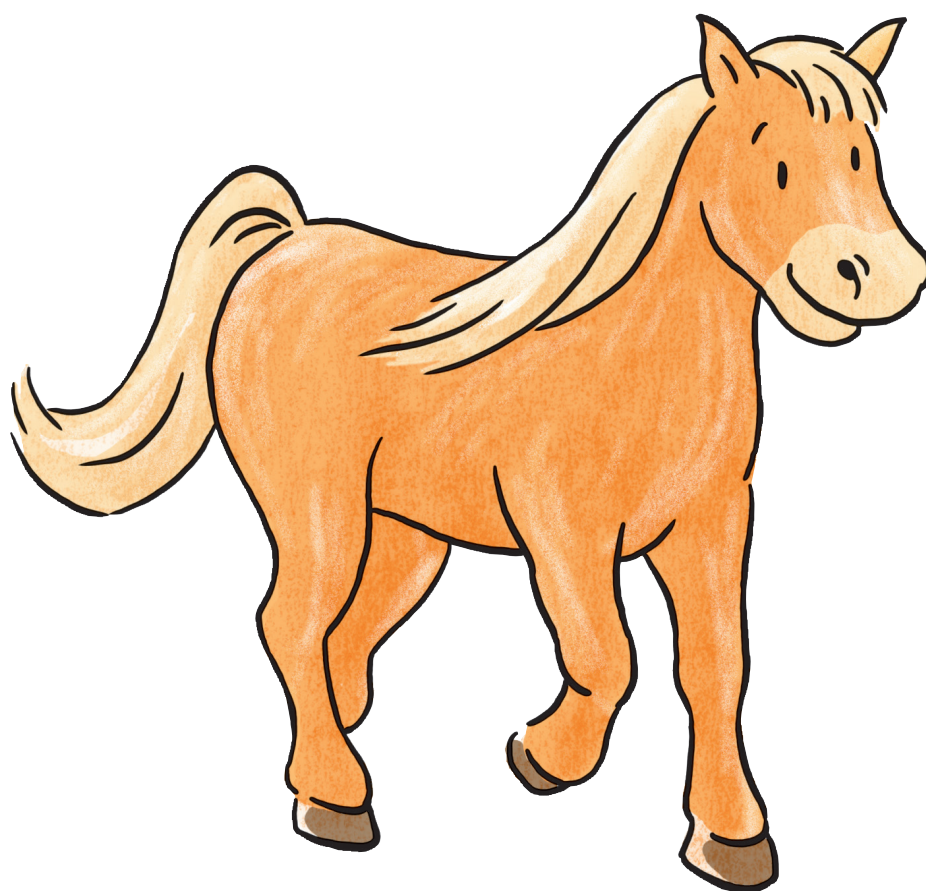


St st



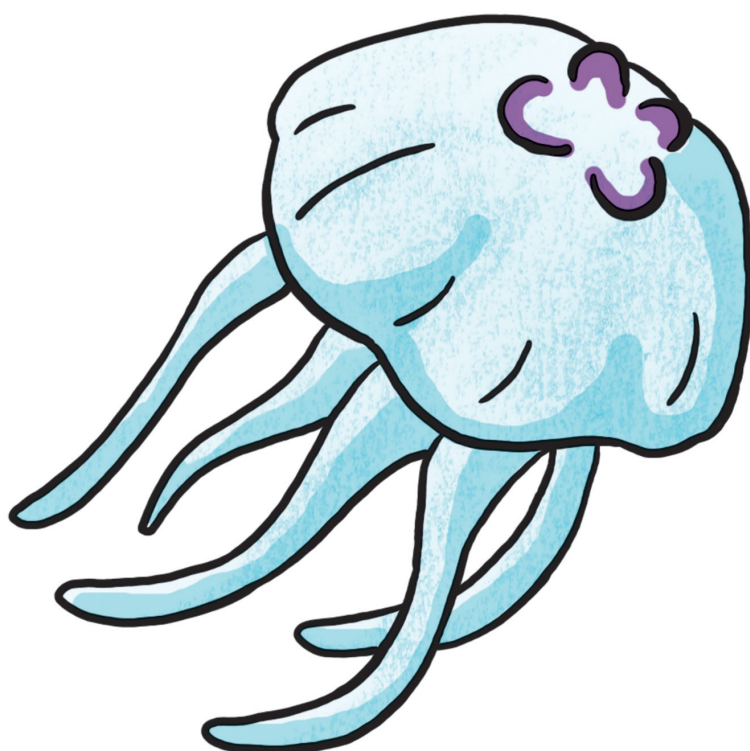


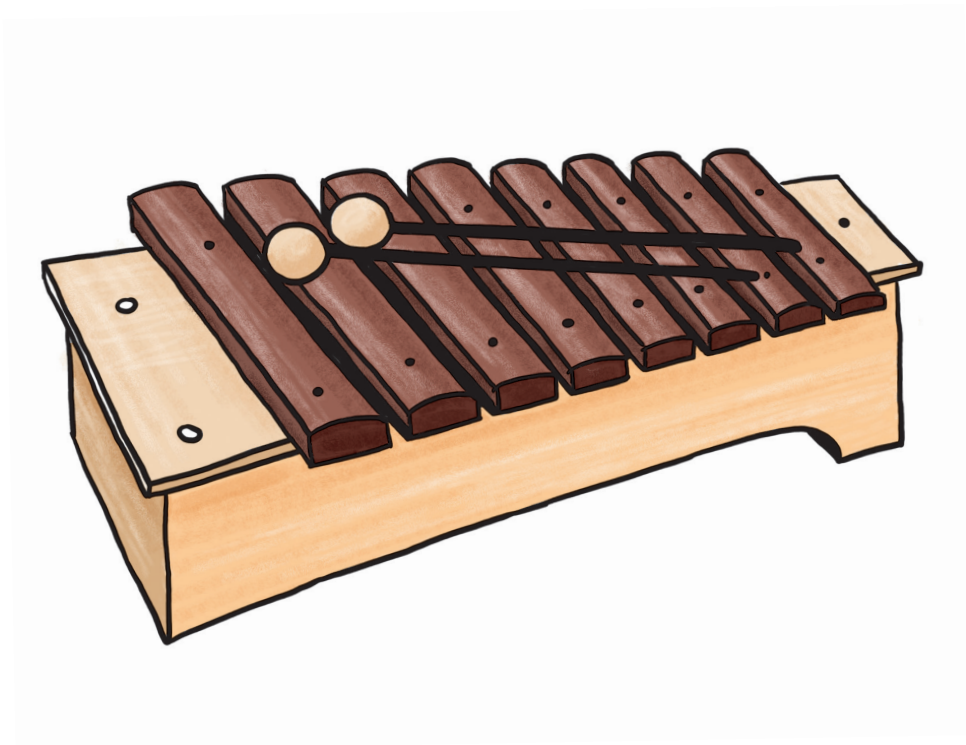
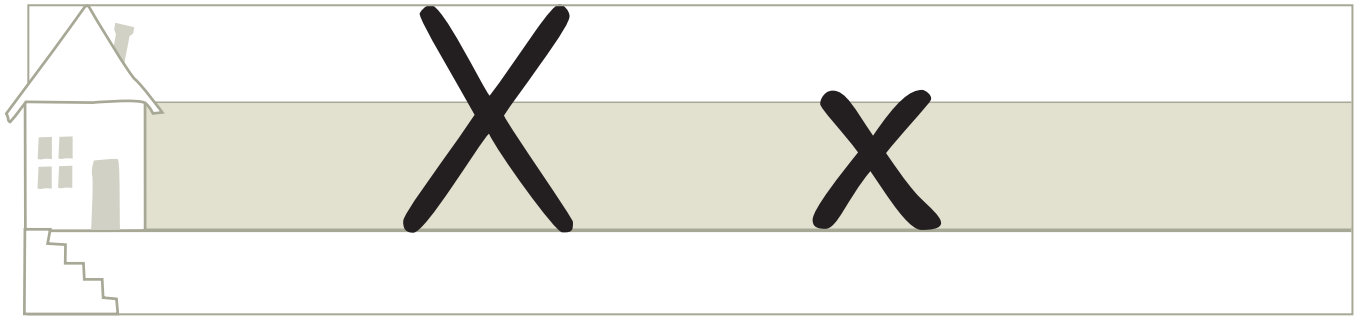
Pf pf

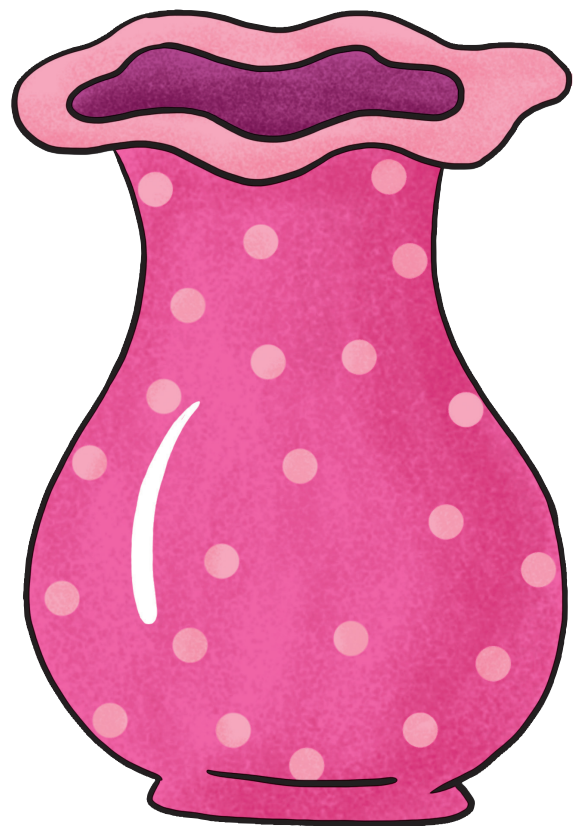
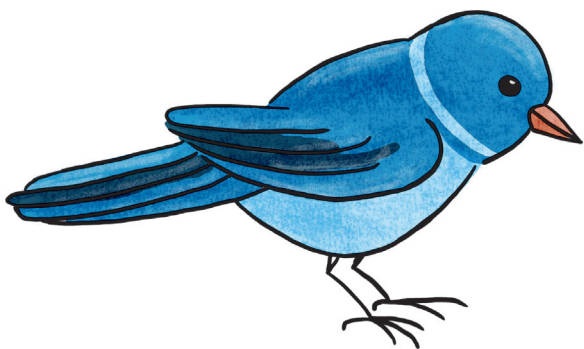
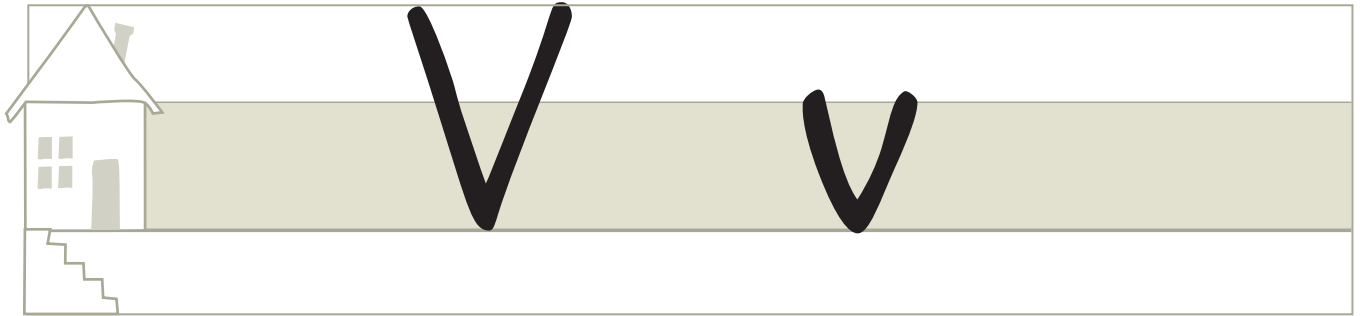


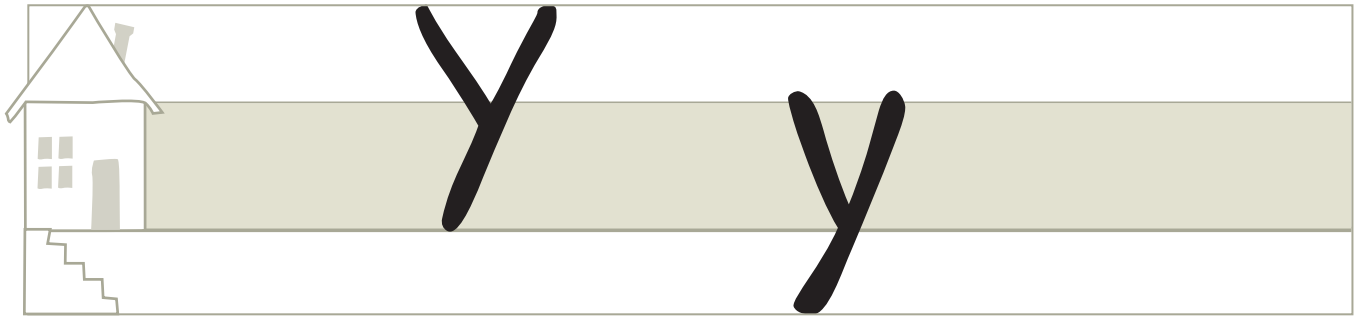


Qu qu

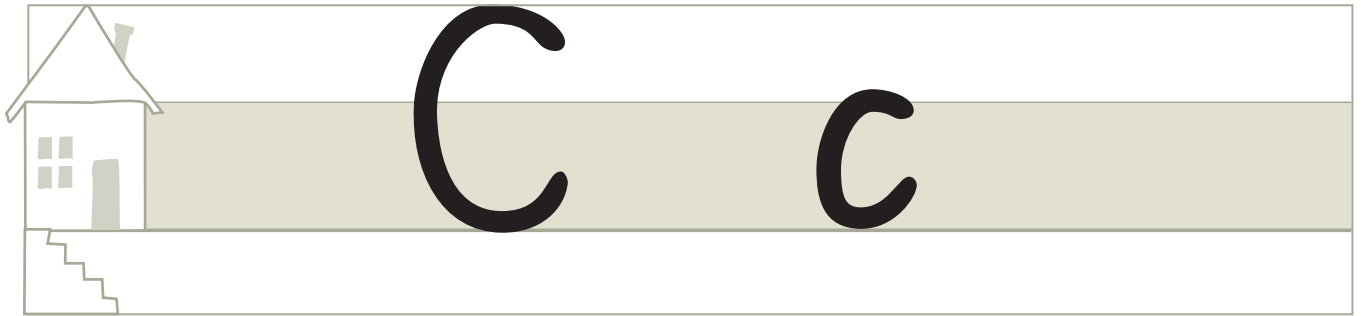


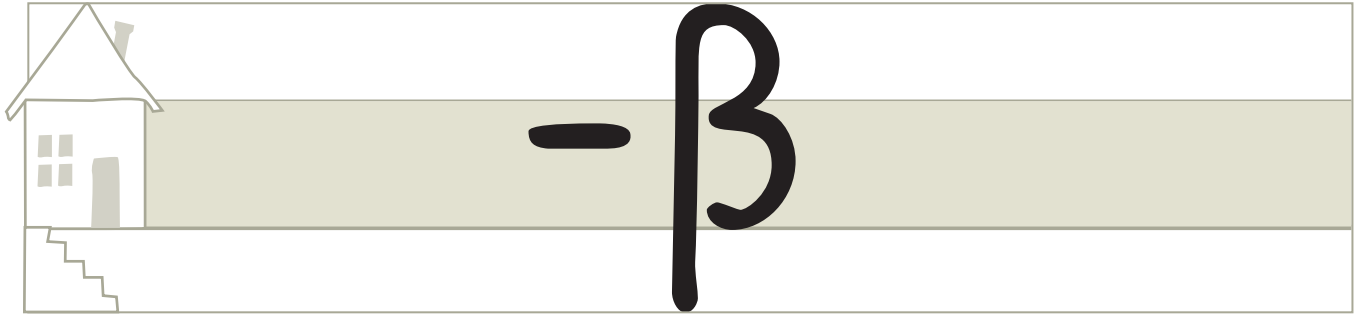






Ypsilon

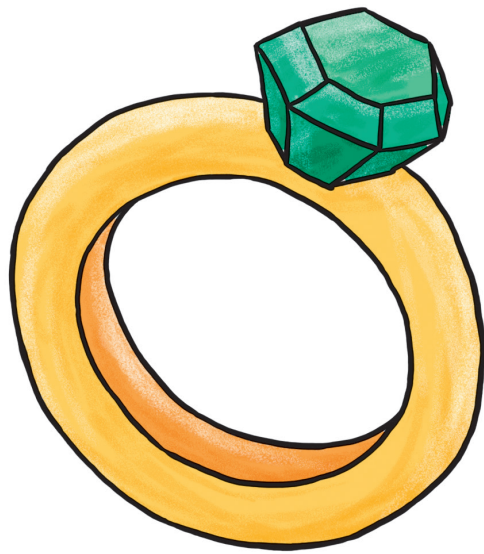




Fuß



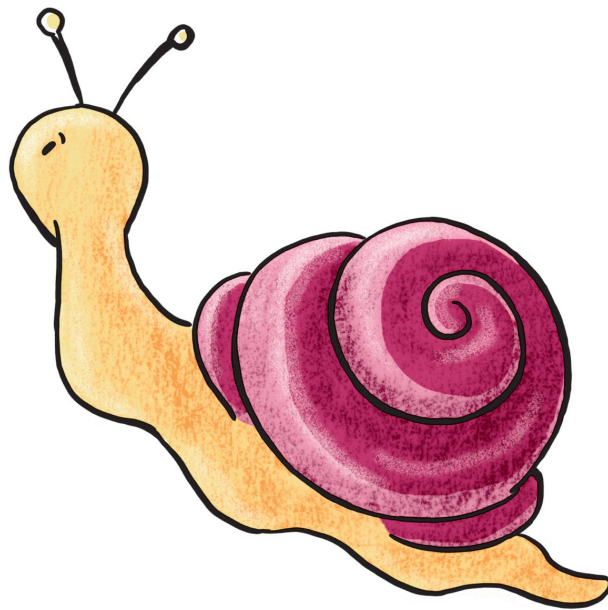
-ng



Ring



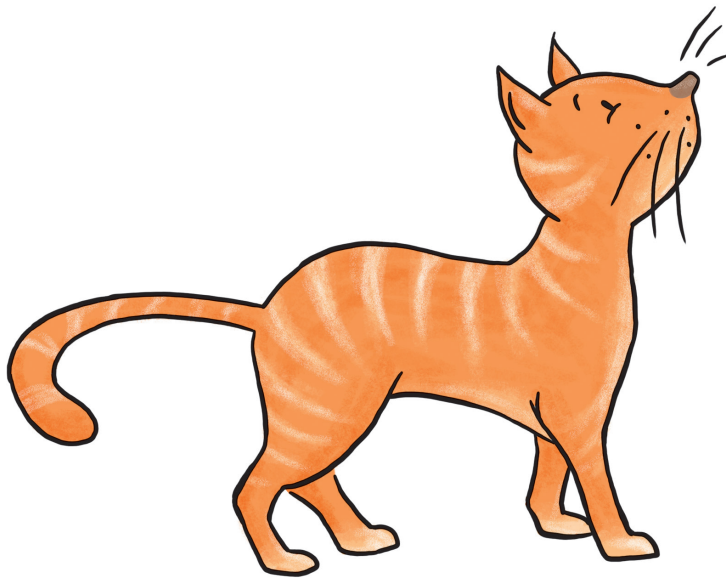
-ck



Schnecke



-tz



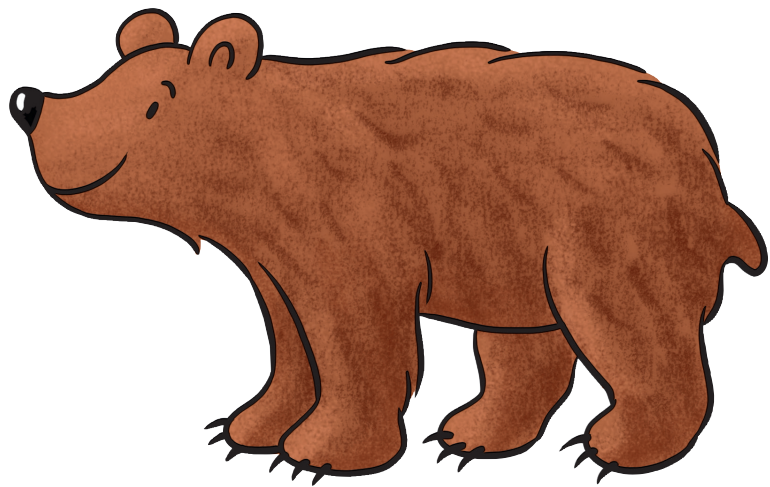
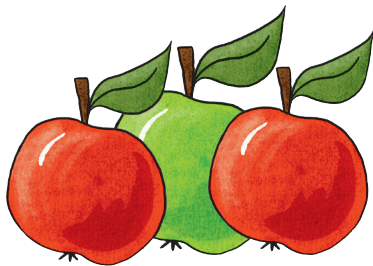
Katze



-ie



Riese



Äpfel, Bär



-äu



Mäuse

Das Werk und seine Teile sind urheberrechtlich geschützt. Jede Nutzung in anderen als den gesetzlich zugelassenen Fällen bedarf der vorherigen schriftlichen Einwilligung des Verlages. Hinweis § 60 a UrhG: Weder das Werk noch seine Teile dürfen ohne eine solche Einwilligung eingescannt und in ein Netzwerk eingestellt werden. Dies gilt auch für Intranets von Schulen und sonstigen Bildungseinrichtungen. Fotomechanische oder andere Wiedergabeverfahren nur mit Genehmigung des Verlages.

© Ernst Klett Verlag GmbH, Stuttgart 2019. Alle Rechte vorbehalten. www.klett.de
Das vorliegende Material dient ausschließlich gemäß § 60b UrhG dem Einsatz im Unterricht an Schulen.

Redaktion: Dr. Michael Schlienz
Herstellung: Sabine Banse

Illustrationen: Friederike Ablang, Berlin; Anke Fröhlich, Leipzig;
Verena Ballhaus, München



Die **Zebra Lautbilder**

- zeigen jeden Buchstaben und die Buchstabenkombinationen der Schreibtablette im Großformat
- sind zum Aufhängen im Klassenzimmer gedacht
- unterstützt den Schriftspracherwerb

Zebra online

www.zebrafanclub.de

