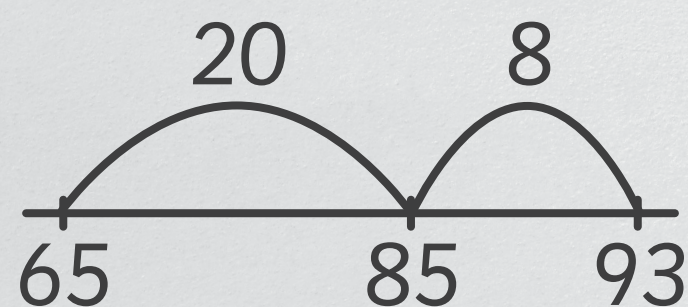


Rechenwege bei Plusaufgaben

Schrittweise

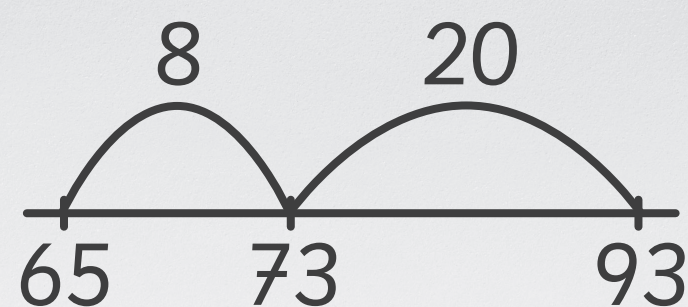
Erst den Zehner dazu

$$\begin{array}{r} 65 + 28 = 93 \\ 65 + 20 = 85 \\ 85 + 8 = 93 \end{array}$$



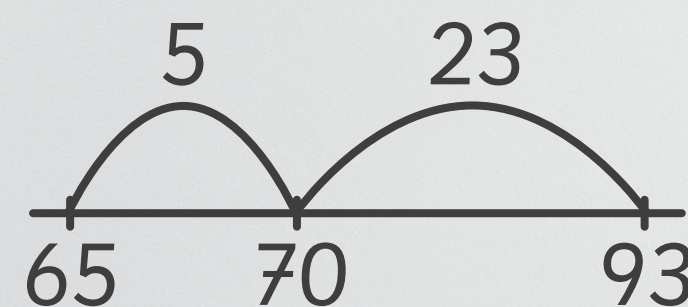
Erst den Einer dazu

$$\begin{array}{r} 65 + 28 = 93 \\ 65 + 8 = 73 \\ 73 + 20 = 93 \end{array}$$



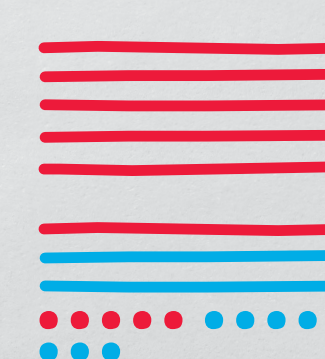
Erst zum Nachbarzehner

$$\begin{array}{r} 65 + 28 = 93 \\ 65 + 5 = 70 \\ 70 + 23 = 93 \end{array}$$



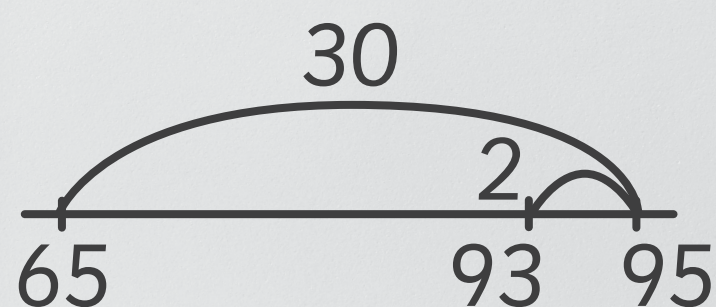
Zehner und Einer extra

$$\begin{array}{r} 65 + 28 = 93 \\ 60 + 20 = 80 \\ 5 + 8 = 13 \\ 80 + 13 = 93 \end{array}$$

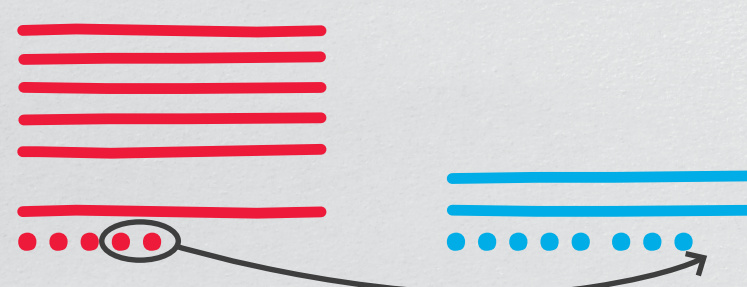


Hilfsaufgabe

$$\begin{array}{r} 65 + 28 = 93 \\ 65 + 30 = 95 \\ 95 - 2 = 93 \end{array}$$



$$\begin{array}{r} 65 + 28 = 93 \\ 63 + 30 = 93 \end{array}$$



Wie rechnest du?

